




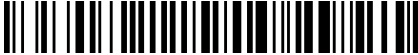


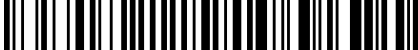




Worklist: 6703

<u>LAB CASE</u>	<u>ITEM</u>	<u>ITEM TYPE</u>	<u>DESCRIPTION</u>	
C2024-0180	1	BCK	AM 28 Blood Multi-Drug Quant Panel 1 by LC-QQQ	
C2024-0214	1	BCK	AM 28 Blood Multi-Drug Quant Panel 1 by LC-QQQ	
C2024-0215	1	BCK	AM 28 Blood Multi-Drug Quant Panel 1 by LC-QQQ	
C2024-0223	1	BCK	AM 28 Blood Multi-Drug Quant Panel 1 by LC-QQQ	
C2024-0232	1	BCK	AM 28 Blood Multi-Drug Quant Panel 1 by LC-QQQ	
C2024-0234	1	BCK	AM 28 Blood Multi-Drug Quant Panel 1 by LC-QQQ	
C2024-0291	1	BCK	AM 28 Blood Multi-Drug Quant Panel 1 by LC-QQQ	
C2024-0293	1	BCK	AM 28 Blood Multi-Drug Quant Panel 1 by LC-QQQ	
C2024-0307	1	BCK	AM 28 Blood Multi-Drug Quant Panel 1 by LC-QQQ	

AM# 28: Multi-Drug Quantitation by LC-MS/MS

Extraction Date: 2/28/24
Plate lot#: 231215

Analyst: Anne Nord
Plate Retest Date: 06/15/2024

Mobile phase A: 5mM Amm Form + 0.01% FA
Blank Blood Lot: 23J52629
Column: Agilent 120 EC-C18 (2.1x 100-2.7um)

Mobile phase B: 0.01% Formic Acid in MeOH
Blank Urine Lot: blood only
LCMS-QQQ ID: 69679

Pre-Analytic:

- 1. Check levels of mobile phases and needle wash refill as needed. Ensure waste is not full.
- 2. Ensure correct column is installed and begin mobile phase flow allow to equilibrate ~ 30 minutes.

Analytic:

- 1. Remove standards, plate, controls, and samples from cold storage. Allow to reach room temperature.
- 2. **Urine Hydrolysis: In blank well, add 250µL urine, 40µL BG Turbo, and 100µL Instant Buffer I. Place on plate shaker for 5 minutes.**
- 3. Using a calibrated pipette, pipette **250µL blood and urine** (if applicable) into wells of analytical (standards) plate. **Pipette ID: P31168J**
- 4. Pipette **250µL 0.5 M ammonium hydroxide** in wells of analytical plate.
- 5. Place on shaking incubator at ambient temp., 900rpm for 15 minutes.
- 6. Transfer **200-450µL of blood+base and urine+base (if applicable)** mixture to corresponding wells of SLE+ plate. Amount transferred: 300
- 7. Apply positive pressure for approx. 10-15 seconds (or until no liquid remains on top of sorbent). **(Load at 85-100 PSI- Selector to the right).**
- 8. Wait 5 minutes.
- 9. Add **900uL ethyl acetate.**
- 10. Wait 5 minutes.
- 11. Apply positive pressure for approx. 15 seconds. **(10-15 PSI- Selector to the left).**
- 12. Add **900uL ethyl acetate.**
- 13. Wait 5 minutes.
- 14. Apply positive pressure for approx. 15 seconds. **(10-15 PSI- Selector to the left).**
- 15. Remove plate containing eluate. Place on SPE Dry and evaporate to dryness at approx. 35°C. **If run contains urine or at the analyst's discretion, add 50µL 1% HCl in MeOH to wells and place plate cover on plate before drying (optional).**
- 16. Reconstitute in **100µL 20% LC MeOH** and heat seal plate with foil. Place in autosampler and run worklist.

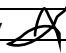
Post-Analytic

- 1. Create batch and process data.
- 2. Make necessary changes to integration limits
- 3. Integration linear and R² values ≥0.98 for each analyte.
- 4. For unknown samples and controls: response ratio within 20% of average of controls and standards, RT within +/- 5% (tramadol RT +/-2%), S/N for primary transition >10 and secondary transitions >5.
- 5. Did all QCs pass for each analyte? Yes, see comments Add Control data to QC tracking spreadsheet.
- 6. Central File Packet to include: LIMS Worklist, Method Checklist, Calibration and Control Reports.

COMMENTS: *Hands of the Analyst Mikel Buffaloe*

See Deviation ISP Dev TOX-24-01 for increase volume pipetted (50µL to 100µL) in the optional step of Analytic Step 15.

Compounds evaluated	Limitations
7-aminoclonazepam	5-250 cal 7 & 8 dropped due to accuracy
Amphetamine	5-100 cal 6, 7 and 8 dropped due to accuracy, qualitative only
Bupropion	
Clonazepam	
Dihydrocodeine	5-500 cal 8 dropped due to accuracy
Diphenhydramine	
Duloxetine	
Fentanyl	

Hydrocodone	
Hydromorphone	
Ketamine	5-500 cal 8 dropped due to accuracy
Lamotrigine	
Methamphetamine	5-250 cal 7 and 8 dropped due to accuracy
Metoprolol	
Norbuprenorphine	
Norhydrocodone	
Norfentanyl	
O-desmethyltramadol	
Olanzapine	5-500 cal 8 dropped due to accuracy  3/5/24
Quetiapine	5-500 cal 8 dropped due to accuracy
Setraline	
Tramadol	
Trazadone	5-500 cal 8 dropped due to QC accuracy
Zolpidem	5-500 cal 8 dropped due to accuracy



Request for Departure from an Analytical Method or Quality Standard

Deviation Number (assigned by QM): ISP Dev TOX-24-01

Date of Request: 2/28/2024

Requestor/Discipline: Anne Nord/Toxicology

Analytical Method/Quality Standard, Revision #: Toxicology AM #28, Revision 18

Temporary or Permanent Deviation: Temporary Deviation

Scope of Deviation (record specific information, e.g. affected programs, evidence types, expected end date; etc):

This is affecting only the Multi-drug quantitative run performed 2/28/2024.

Deviation Request (Describe detailed instructions of the changes being made; include reference to specific section number(s) in the method manual):

4.1.12: "Option step: add 50 μ L of 1% HCl in MeOH to all wells in the run and place ACT cover on top of plate prior to drying." In this step 100 μ L was used.

Technical Justification for Analytical Method Deviations:

It is not anticipated there will be any effect on the results. The increased amount was pipetted into all samples, calibrators, and controls. Any effect will be identified by the calibrators and controls.

Technical Review

Departure approved
Comments:

Departure Not Approved
Comments:

Approver: Celena Shrum *Celena Shrum*
Title: Toxicology Lead

Date: 02/28/2024

Quality Review

Quality Approver: *Lana Hattax*
Title: Lab Improvement Manager
Date: 2/28/24



	1	2	3	4	5	6	7	8	9	10	11	12
A	IS + Cal. 1	IS + QC_1	0223-1									
B	IS + Cal. 2	IS + QC_2	0180-1									
C	IS + Cal. 3	IS + QC_3	0232-1									
D	IS + Cal. 4	IS + QC_4	0291-1									
E	IS + Cal. 5	IS + QC_2	0234-1									
F	IS + Cal. 6	neg blood	0293-1									
G	IS + Cal. 7	0214-1	0307-1									
H	IS + Cal. 8	0215-1										

blank in front

plate position 2

c2024-____-__

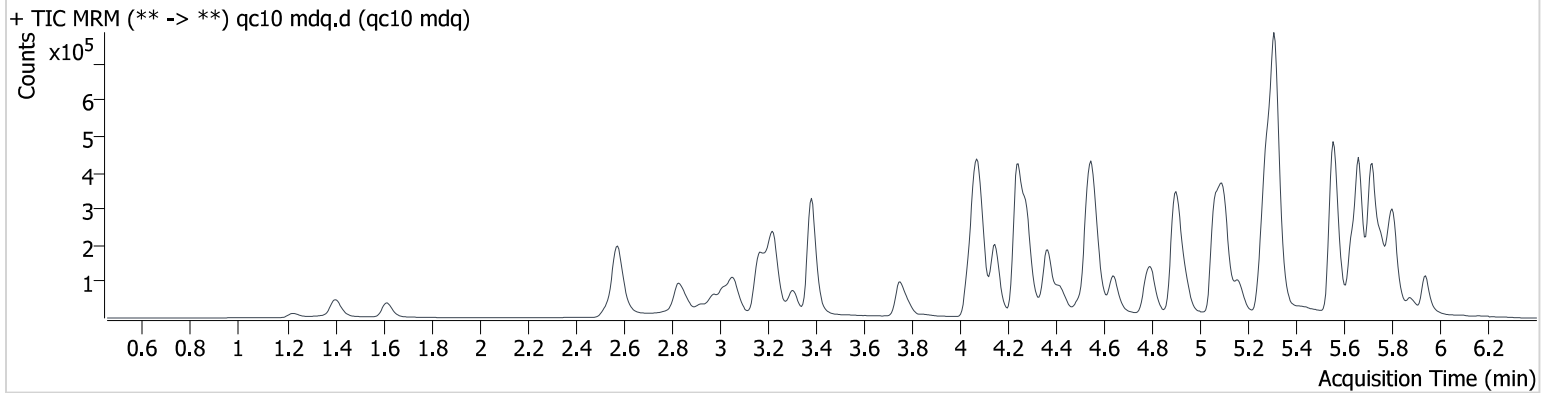
AM #28 Multi-Drug Quant. Results

Batch results D:\MassHunter\Data\2024\am 27-28\022824\QuantResults\am 28.batch.bin
Calibration Last Update 3/5/2024 9:43:10 AM

Instrument 69679
Type QC
Acq. Method mdqp1 121523.m
Sample Position P2-A2
Injection Volume 3
Acq. Date-Time 2/28/2024 1:21:15 PM
Sample Info.

Data File qc10 mdq.d
Sample qc10 mdq
Operator Anne Nord
Comment Only drugs and concentrations listed on the laboratory report itself are appropriate to be used for interpretation purposes. Any drugs or values in the notes but not included on the report are used by laboratory personnel to make determinations/reach conclusions within the confines of the methods.

Sample Chromatogram



Name	RT	Resp.	S/N	Ratio	S/N	ISTD Resp.	Final Conc.
7-aminoclonazepam	4.258	8462	1559.2	120.37	511.4	96604	10.492 ng/ml
Amphetamine	3.058	54787	4617.4	273.81	8219.2	154918	10.138 ng/ml
Bupropion	4.799	97781	52483.8	73.28	4123.5	273390	10.122 ng/ml
Clonazepam	5.607	14277	2833.9	35.22	1339.1	28512	9.803 ng/ml
Dihydrocodeine	2.565	14495	392.4	64.76	251.9	86803	10.593 ng/ml
Diphenhydramine	5.316	229856	25864.7	34.41	4973.8	1319439	8.050 ng/ml
Duloxetine	5.660	18993	698.8	9.99	67.5	61860	10.056 ng/ml
Fentanyl	5.106	8256	1647.8	147.93	2950.0	385984	0.954 ng/ml
Hydrocodone	3.045	33117	1847.2	40.84	532.0	181847	9.748 ng/ml
Hydromorphone	1.623	23054	2194.0	75.03	∞	89392	8.516 ng/ml
Ketamine	4.057	62589	8017.4	37.01	∞	298573	10.135 ng/ml
Lamotrigine	4.321	4226	3180.2	110.97	264.4	122425	9.060 ng/ml
Methamphetamine	3.232	224748	7186.6	36.95	3513.7	415769	10.721 ng/ml
Metoprolol	4.335	16235	16361.9	93.87	2554.6	343275	9.982 ng/ml
Norbuprenorphine	5.017	962	1390.6	98.62	2240.9	15040	0.955 ng/ml
Norfentanyl	4.098	6209	744.0	28.09	3863.4	691803	1.008 ng/ml
Norhydrocodone	3.096	5033	1508.3	20.24	211.7	43041	9.635 ng/ml
O-desmethyl-tramadol	3.389	171903	20948.7	8.09	6917.5	680372	9.949 ng/ml
Olanzapine	4.498	96311	642.6	40.72	306.8	225337	10.154 ng/ml
Quetiapine	5.563	148952	126840.2	65.76	27928.7	232863	10.271 ng/ml
Sertraline	5.788	39336	∞	89.57	∞	153385	10.507 ng/ml
Tramadol	4.254	133412	2465.9	3.95	301.2	740796	10.113 ng/ml
Trazodone	5.157	83573	9770.0	134.33	7809.3	423723	10.247 ng/ml
Zolpidem	4.921	191909	4939.0	29.21	7425.6	808888	9.668 ng/ml

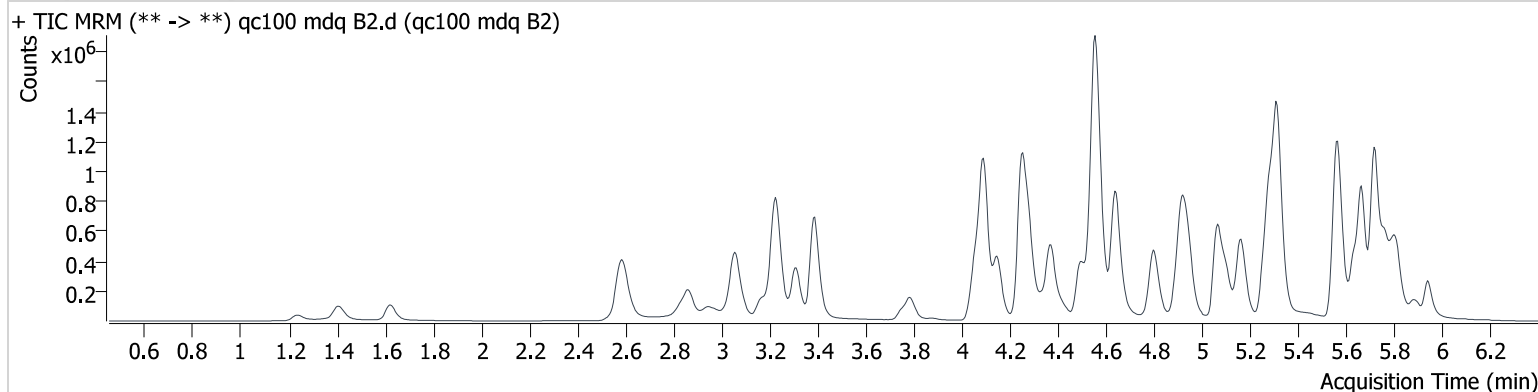
AM #28 Multi-Drug Quant. Results

Batch results D:\MassHunter\Data\2024\am 27-28\022824\QuantResults\am 28.batch.bin
Calibration Last Update 3/5/2024 9:43:10 AM

Instrument 69679
Type QC
Acq. Method mdqp1 121523.m
Sample Position P2-B2
Injection Volume 3
Acq. Date-Time 2/28/2024 3:49:21 PM
Sample Info.

Data File qc100 mdq B2.d
Sample qc100 mdq B2
Operator Anne Nord
Comment Only drugs and concentrations listed on the laboratory report itself are appropriate to be used for interpretation purposes. Any drugs or values in the notes but not included on the report are used by laboratory personnel to make determinations/reach conclusions within the confines of the methods.

Sample Chromatogram



Name	RT	Resp.	S/N	Ratio	S/N	ISTD Resp.	Final Conc.
7-aminoclonazepam	4.253	78339	2349.7	120.34	9012.6	98364	109.173 ng/ml
Amphetamine	3.064	299915	11498.7	268.72	121793.0	111657	96.053 ng/ml
Bupropion	4.804	661973	108231.0	73.79	8255.7	199622	97.331 ng/ml
Clonazepam	5.607	96484	71910.2	34.67	13842.9	18160	103.922 ng/ml
Dihydrocodeine	2.565	109440	916.4	70.00	12501.9	70174	104.815 ng/ml
Diphenhydramine	5.316	1616763	81454.0	33.33	99970.4	867273	80.306 ng/ml
Duloxetine	5.660	101136	1284.7	8.21	5513.4	34412	98.684 ng/ml
Fentanyl	5.111	63830	4986.3	133.97	12437.1	275284	9.747 ng/ml
Hydrocodone	3.045	213290	17787.0	41.52	∞	124799	99.194 ng/ml
Hydromorphone	1.623	168918	∞	72.49	∞	55780	99.488 ng/ml
Ketamine	4.057	422154	53519.8	37.65	48215.9	212283	105.334 ng/ml
Lamotrigine	4.321	28976	5461.7	105.39	331.3	61424	122.883 ng/ml
Methamphetamine	3.232	985727	40806.5	37.39	30027.9	304162	101.738 ng/ml
Metoprolol	4.335	123064	588569.5	99.97	∞	234573	100.779 ng/ml
Norbuprenorphine	5.022	6268	12318.0	94.08	7511.2	11084	9.916 ng/ml
Norfentanyl	4.098	37865	3770.0	30.09	29248.7	443219	9.016 ng/ml
Norhydrocodone	3.096	38380	2915.7	22.82	1193.3	34718	84.472 ng/ml
O-desmethyl-tramadol	3.388	1257569	∞	7.46	6320.4	505836	100.341 ng/ml
Olanzapine	4.492	840233	2012.2	44.92	71158.2	220884	99.194 ng/ml
Quetiapine	5.563	1174628	584508.6	64.30	149369.6	189536	110.378 ng/ml
Sertraline	5.788	176953	∞	93.21	∞	79726	95.585 ng/ml
Tramadol	4.254	986960	∞	4.01	2940.4	529687	108.804 ng/ml
Trazodone	5.162	598988	75379.9	130.00	130797.0	326696	97.826 ng/ml
Zolpidem	4.921	1422485	23761.4	29.72	298166.4	605874	101.241 ng/ml

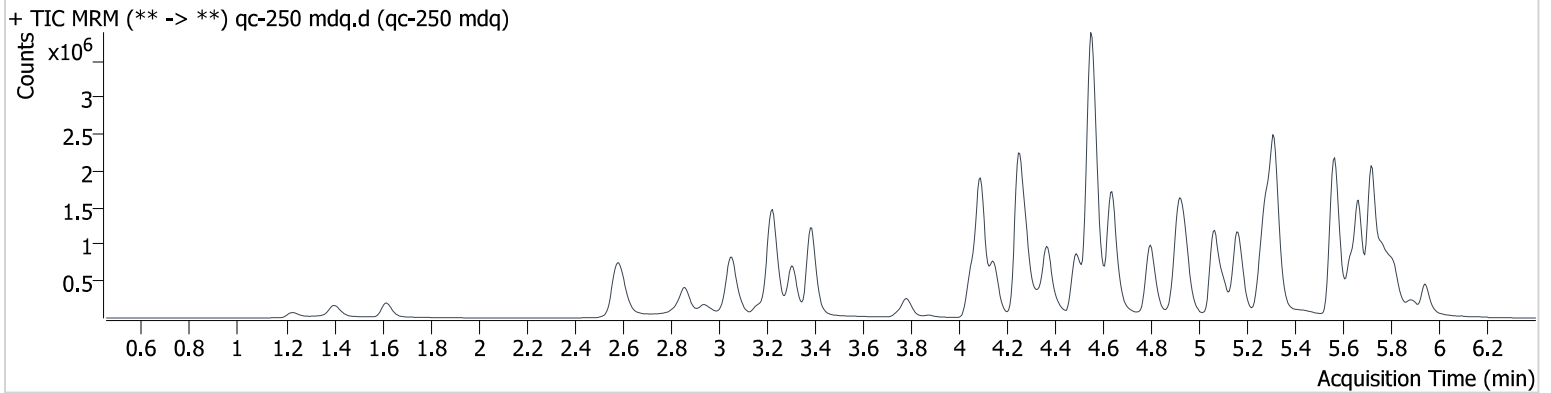
AM #28 Multi-Drug Quant. Results

Batch results D:\MassHunter\Data\2024\am 27-28\022824\QuantResults\am 28.batch.bin
Calibration Last Update 3/5/2024 9:43:10 AM

Instrument 69679
Type QC
Acq. Method mdqp1 121523.m
Sample Position P2-C2
Injection Volume 3
Acq. Date-Time 2/28/2024 1:29:57 PM
Sample Info.

Data File qc-250 mdq.d
Sample qc-250 mdq
Operator Anne Nord
Comment Only drugs and concentrations listed on the laboratory report itself are appropriate to be used for interpretation purposes. Any drugs or values in the notes but not included on the report are used by laboratory personnel to make determinations/reach conclusions within the confines of the methods.

Sample Chromatogram



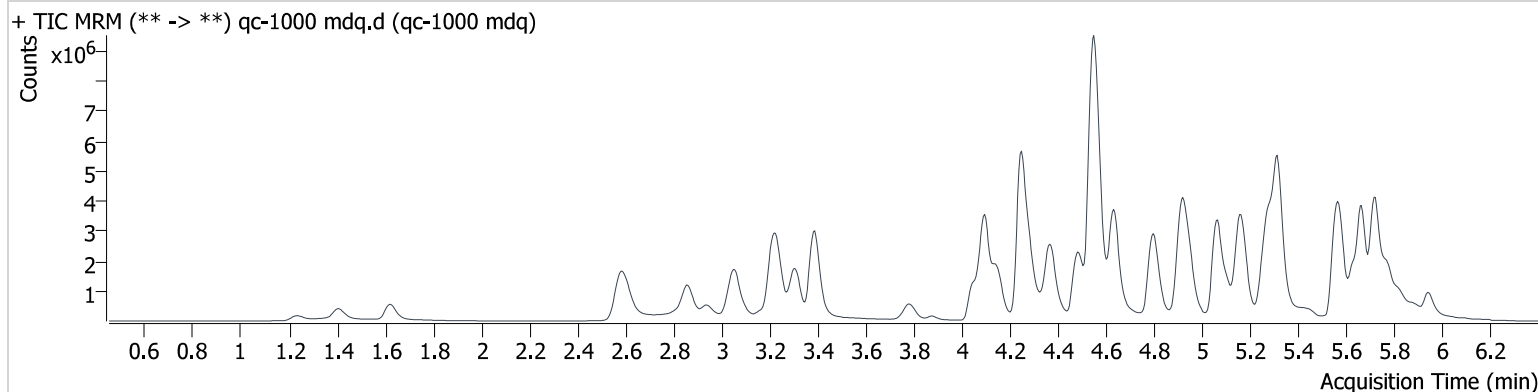
Name	RT	Resp.	S/N	Ratio	S/N	ISTD Resp.	Final Conc.
7-aminoclonazepam	4.253	151272	2863.1	113.14	5769.3	73701	284.043 ng/ml
Amphetamine	3.058	551454	40445.9	263.66	∞	99867	200.512 ng/ml
Bupropion	4.799	1486333	138565.1	73.40	96958.4	183802	237.955 ng/ml
Clonazepam	5.607	183112	44867.6	33.35	17093.3	14485	247.258 ng/ml
Dihydrocodeine	2.560	286954	36900.9	65.30	2712.4	72243	268.047 ng/ml
Diphenhydramine	5.316	3327367	757216.0	33.38	40708.4	698459	204.282 ng/ml
Duloxetine	5.660	189409	1902.4	8.87	1571.1	27796	229.181 ng/ml
Fentanyl	5.106	157323	79821.0	133.09	31758.0	255986	25.734 ng/ml
Hydrocodone	3.040	481959	14017.9	40.13	12148.2	115686	243.122 ng/ml
Hydromorphone	1.618	369586	∞	72.66	∞	48968	247.887 ng/ml
Ketamine	4.051	841370	127665.8	38.56	37910.6	188123	238.248 ng/ml
Lamotrigine	4.316	63610	16250.0	99.36	1264.0	43974	376.665 ng/ml
Methamphetamine	3.227	2023961	160644.1	36.98	∞	286169	230.898 ng/ml
Metoprolol	4.335	255521	205579.9	99.09	∞	186591	261.472 ng/ml
Norbuprenorphine	5.022	14476	119459.6	93.98	20721.6	10423	24.626 ng/ml
Norfentanyl	4.098	68664	8799.3	28.68	38656.2	310567	23.224 ng/ml
Norhydrocodone	3.096	91755	4383.3	24.78	∞	30952	225.205 ng/ml
O-desmethyl-tramadol	3.389	2713996	3050408.8	7.42	∞	466184	235.338 ng/ml
Olanzapine	4.487	1880106	6570.9	45.19	6264.6	217138	227.210 ng/ml
Quetiapine	5.569	2246618	240879.9	64.52	∞	171181	235.144 ng/ml
Sertraline	5.788	338592	∞	93.30	∞	59903	244.360 ng/ml
Tramadol	4.249	2245923	34253.1	4.13	∞	480109	273.835 ng/ml
Trazodone	5.157	1347891	161743.8	129.79	651763.0	313782	229.612 ng/ml
Zolpidem	4.916	2993639	194975.3	29.83	149647.1	541879	239.071 ng/ml

AM #28 Multi-Drug Quant. Results

Batch results D:\MassHunter\Data\2024\am 27-28\022824\QuantResults\am 28.batch.bin
Calibration Last Update 3/5/2024 9:43:10 AM

Instrument	69679	Data File	qc-1000 mdq.d
Type	QC	Sample	qc-1000 mdq
Acq. Method	mdqp1 121523.m	Operator	Anne Nord
Sample Position	P2-D2	Comment	Only drugs and concentrations listed on the laboratory report itself are appropriate to be used for interpretation purposes. Any drugs or values in the notes but not included on the report are used by laboratory personnel to make determinations/reach conclusions within the confines of the methods.
Injection Volume	3		
Acq. Date-Time	2/28/2024 1:38:39 PM		
Sample Info.			

Sample Chromatogram



Name	RT	Resp.	S/N	Ratio	S/N	ISTD Resp.	Final Conc.
7-aminoclonazepam	4.253	164015	43932.6	114.14	16975.4	27117	840.355 ng/ml
Amphetamine	3.064	1148583	22330.4	254.27	9383.5	91459	459.706 ng/ml
Bupropion	4.799	5236375	602111.1	66.62	1509322.4	186581	826.873 ng/ml
Clonazepam	5.607	349693	72059.5	35.26	15194.4	6871	995.396 ng/ml
Dihydrocodeine	2.560	834902	50304.0	65.89	3266.6	73635	766.458 ng/ml
Diphenhydramine	5.321	8990009	∞	30.79	114523.0	467143	823.411 ng/ml
Duloxetine	5.665	244689	264.7	10.61	37.6	9564	861.279 ng/ml
Fentanyl	5.106	673835	316828.2	139.71	139859.2	249325	112.960 ng/ml
Hydrocodone	3.040	1582977	∞	40.54	∞	110567	837.733 ng/ml
Hydromorphone	1.623	1223052	∞	72.59	∞	37270	1077.632 ng/ml
Ketamine	4.046	1887158	408293.5	37.98	49238.8	159507	632.032 ng/ml
Lamotrigine	4.311	132628	35680.0	95.04	70561.0	18199	1897.353 ng/ml
Methamphetamine	3.227	5101004	2607379.0	38.05	206415557.9	328493	515.923 ng/ml
Metoprolol	4.335	584464	∞	98.55	∞	119370	932.326 ng/ml
Norbuprenorphine	5.017	49147	162960.4	104.78	51159.2	9735	90.018 ng/ml
Norfentanyl	4.103	102095	7630.6	28.86	147933.6	90763	117.875 ng/ml
Norhydrocodone	3.096	283073	26346.8	27.44	8567.1	21385	1002.876 ng/ml
O-desmethyl-tramadol	3.389	8356350	661919.7	6.84	171249.2	385244	877.597 ng/ml
Olanzapine	4.482	5231084	67427.1	46.39	35547.9	212214	648.902 ng/ml
Quetiapine	5.569	4571961	103681.3	57.44	15364101.8	113509	724.250 ng/ml
Sertraline	5.788	619662	∞	94.04	∞	29330	915.047 ng/ml
Tramadol	4.244	6615758	∞	3.89	∞	439624	881.903 ng/ml
Trazodone	5.157	4472519	∞	133.46	498174.8	323018	740.791 ng/ml
Zolpidem	4.916	8637720	526942.4	29.61	355205.5	509198	735.376 ng/ml

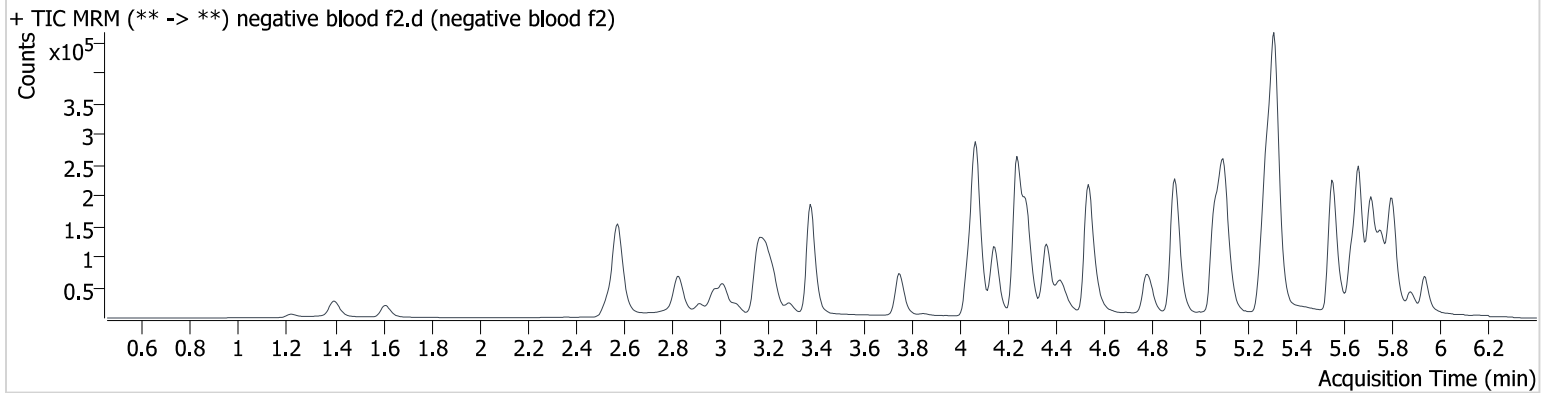
AM #28 Multi-Drug Quant. Results

Batch results D:\MassHunter\Data\2024\am 27-28\022824\QuantResults\am 28.batch.bin
Calibration Last Update 3/5/2024 9:43:10 AM

Instrument 69679
Type Sample
Acq. Method mdqp1 121523.m
Sample Position P2-F2
Injection Volume 3
Acq. Date-Time 2/28/2024 1:56:05 PM
Sample Info.

Data File negative blood f2.d
Sample negative blood f2
Operator Anne Nord
Comment Only drugs and concentrations listed on the laboratory report itself are appropriate to be used for interpretation purposes. Any drugs or values in the notes but not included on the report are used by laboratory personnel to make determinations/reach conclusions within the confines of the methods.

Sample Chromatogram

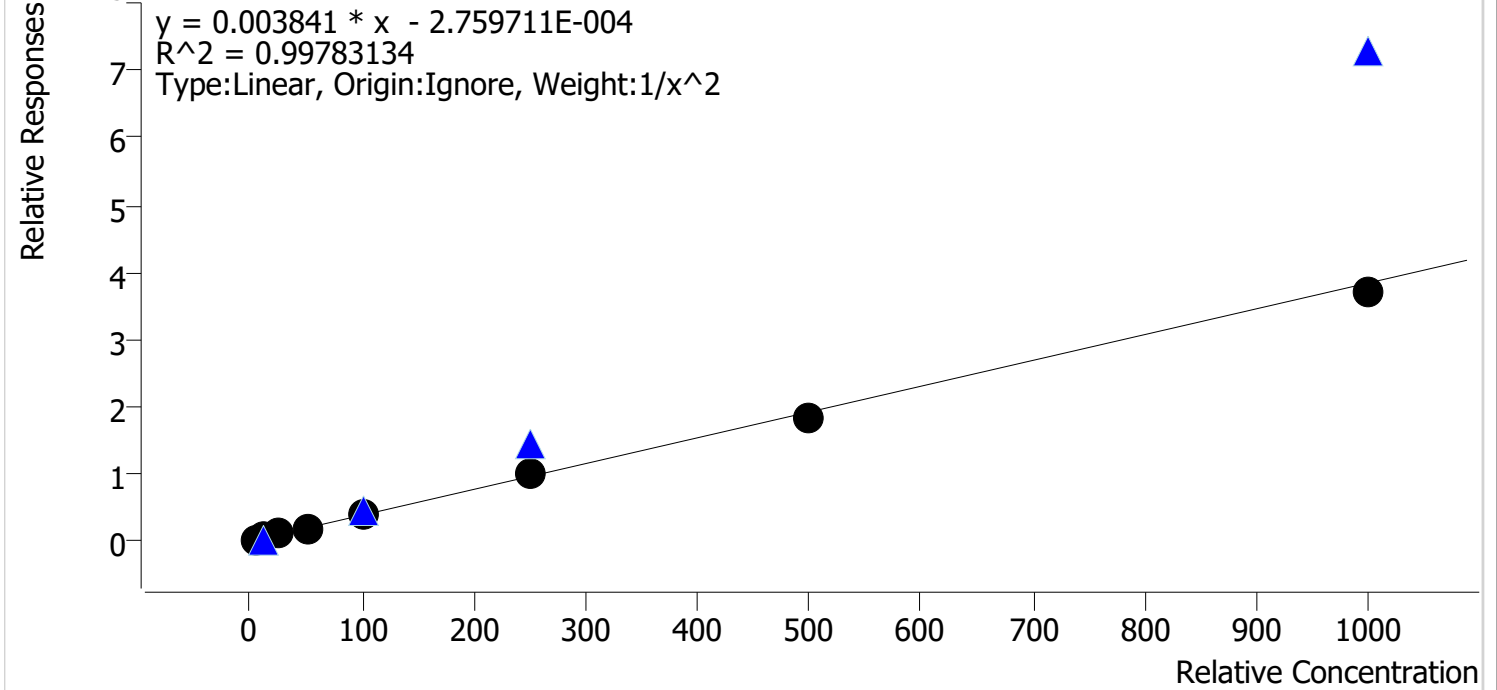


Compound Calibration Report

Batch results D:\MassHunter\Data\2024\lam 27-28\022824\QuantResults\lam 28.batch.bin
Last Cal. Update 3/5/2024 9:43 AM
Analyst Name ISP\datastor
Analyte Lamotrigine

Internal Standard Carisoprodol-D7

Lamotrigine - 8 Levels, 8 Levels Used, 8 Points, 8 Points Used, 4 QCs

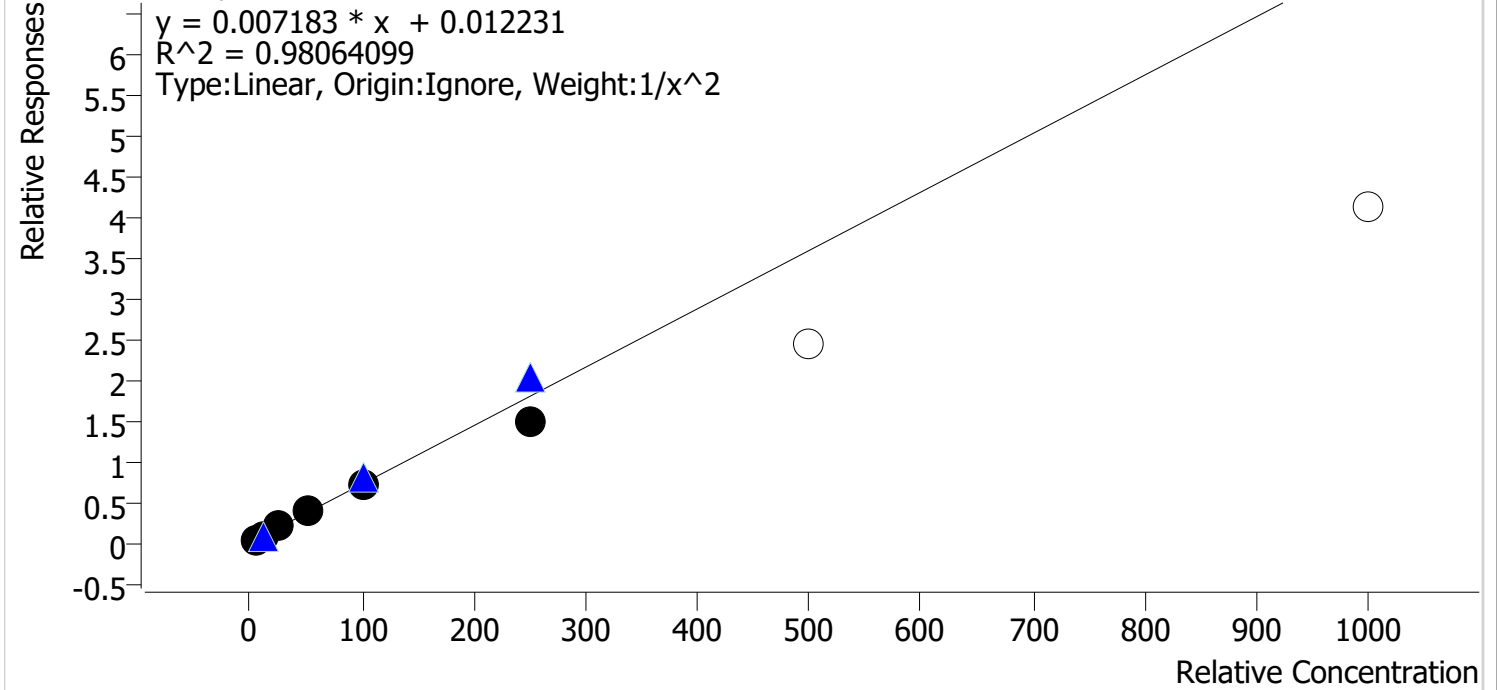


Sample	Level	Enabled	Expected Concentration	Final Concentration	Accuracy
cal 1 mdq	1	✓	5.0	4.8	96.1
cal 2 mdq	2	✓	10.0	10.7	106.7
cal 3 mdq	3	✓	25.0	25.7	102.9
cal 4 mdq	4	✓	50.0	50.4	100.9
cal 5 mdq	5	✓	100.0	98.3	98.3
cal 6 mdq	6	✓	250.0	257.5	103.0
cal 7 mdq	7	✓	500.0	474.9	95.0
cal 8 mdq	8	✓	1000.0	972.0	97.2

Compound Calibration Report

Batch results D:\MassHunter\Data\2024\lam 27-28\022824\QuantResults\lam 28.batch.bin
Last Cal. Update 3/5/2024 9:43 AM
Analyst Name ISP\datastor
Analyte 7-aminoclonazepam **Internal Standard** 7-Aminoclonazepam-D4

7-aminoclonazepam - 8 Levels, 6 Levels Used, 8 Points, 6 Points Used, 4 QCs

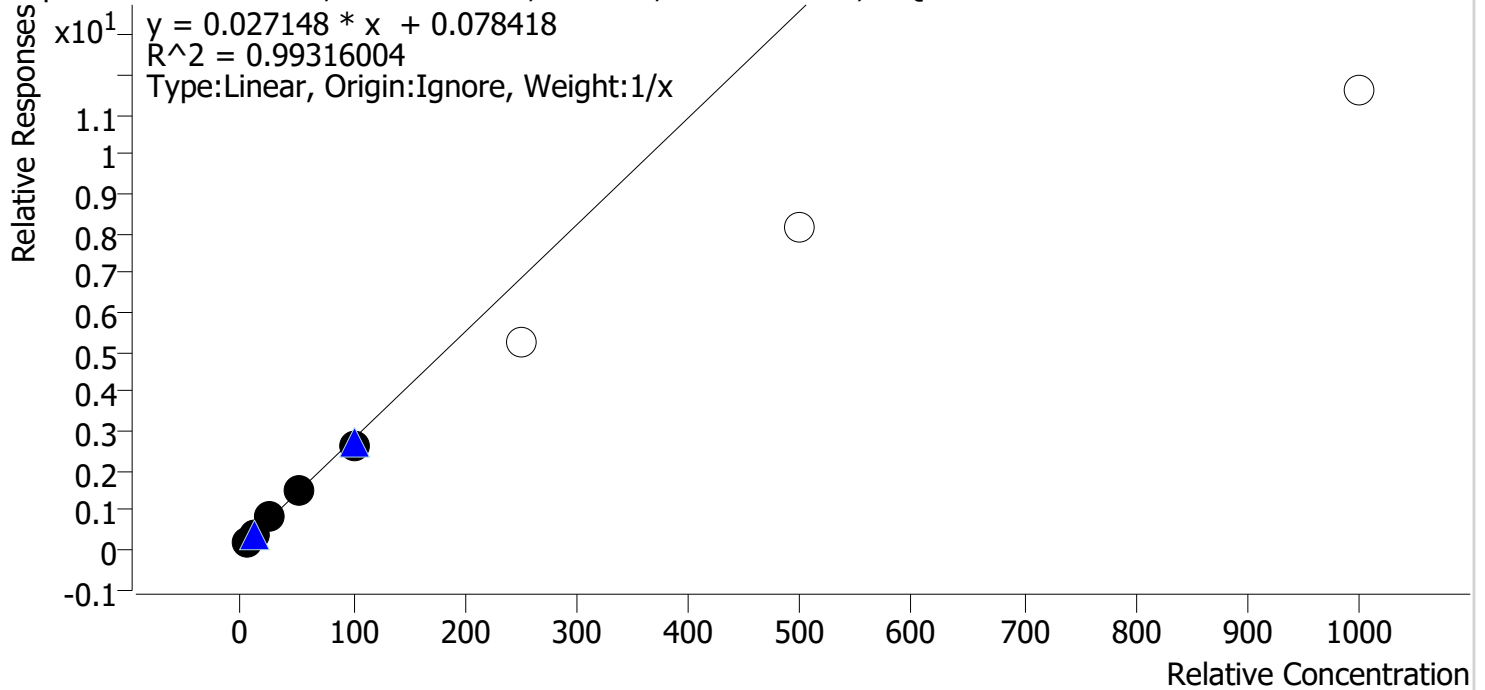


Sample	Level	Enabled	Expected Concentration	Final Concentration	Accuracy
cal 1 mdq	1	✓	5.0	4.6	91.6
cal 2 mdq	2	✓	10.0	11.3	113.4
cal 3 mdq	3	✓	25.0	26.7	107.0
cal 4 mdq	4	✓	50.0	53.8	107.6
cal 5 mdq	5	✓	100.0	97.4	97.4
cal 6 mdq	6	✓	250.0	207.3	82.9
cal 7 mdq	7	✗	500.0	343.1	68.6
cal 8 mdq	8	✗	1000.0	576.8	57.7

Compound Calibration Report

Batch results D:\MassHunter\Data\2024\am 27-28\022824\QuantResults\am 28.batch.bin
Last Cal. Update 3/5/2024 9:43 AM
Analyst Name ISP\datastor
Analyte Amphetamine **Internal Standard** Amphetamine-D11

Amphetamine - 8 Levels, 5 Levels Used, 8 Points, 5 Points Used, 4 QCs

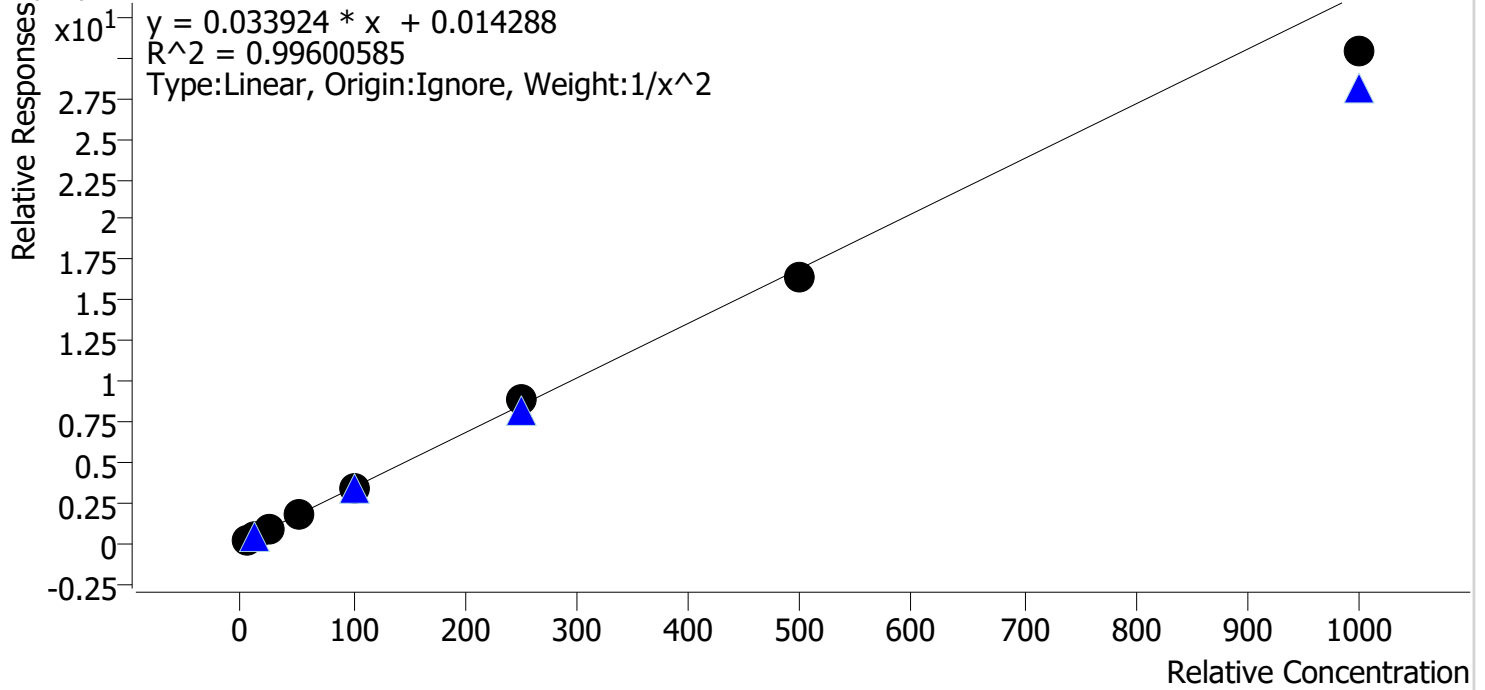


Sample	Level	Enabled	Expected Concentration	Final Concentration	Accuracy
cal 1 mdq	1	✓	5.0	4.3	85.2
cal 2 mdq	2	✓	10.0	10.2	102.5
cal 3 mdq	3	✓	25.0	28.3	113.2
cal 4 mdq	4	✓	50.0	51.9	103.8
cal 5 mdq	5	✓	100.0	95.3	95.3
cal 6 mdq	6	✗	250.0	189.0	75.6
cal 7 mdq	7	✗	500.0	297.6	59.5
cal 8 mdq	8	✗	1000.0	425.5	42.5

Compound Calibration Report

Batch results D:\MassHunter\Data\2024\lam 27-28\022824\QuantResults\lam 28.batch.bin
Last Cal. Update 3/5/2024 9:43 AM
Analyst Name ISP\datastor
Analyte Bupropion **Internal Standard** Bupropion-D9

Bupropion - 8 Levels, 8 Levels Used, 8 Points, 8 Points Used, 4 QCs

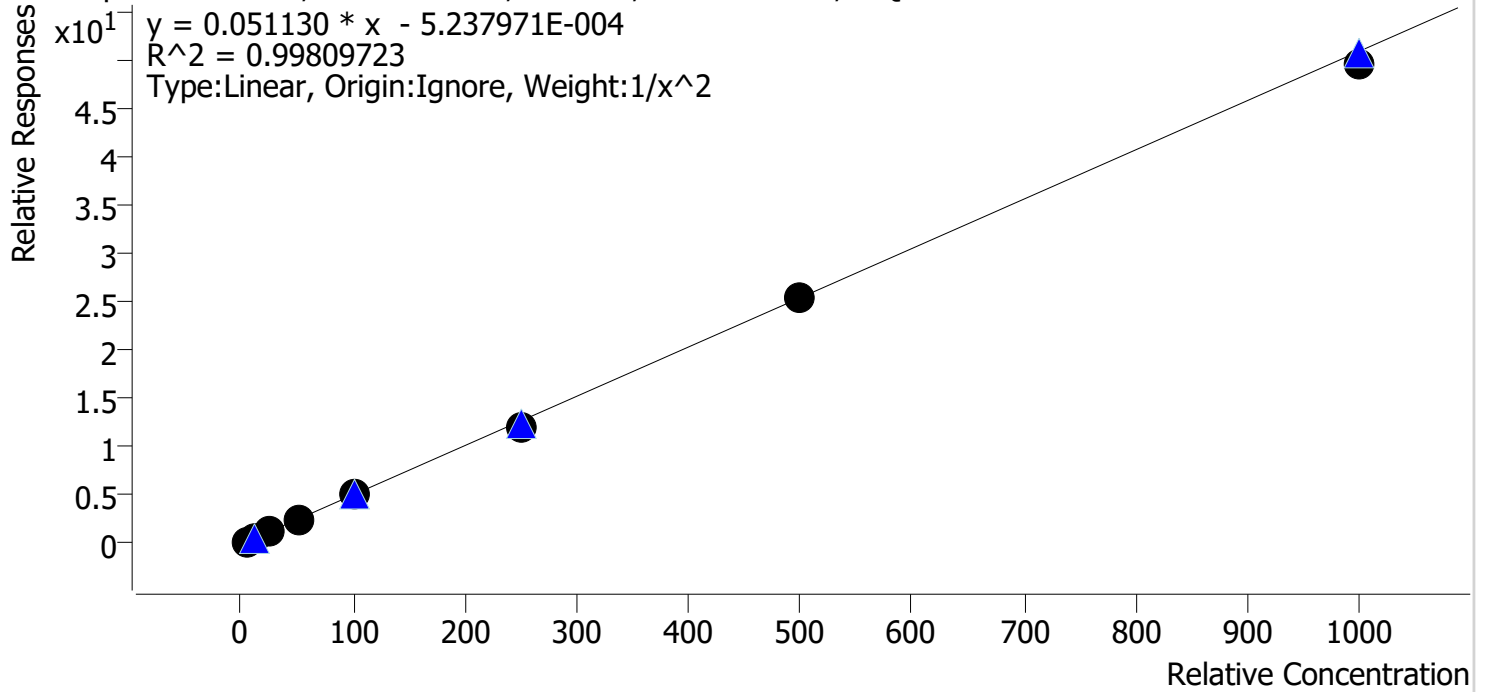


Sample	Level	Enabled	Expected Concentration	Final Concentration	Accuracy
cal 1 mdq	1	✓	5.0	4.9	98.6
cal 2 mdq	2	✓	10.0	9.9	99.3
cal 3 mdq	3	✓	25.0	26.3	105.0
cal 4 mdq	4	✓	50.0	53.5	107.0
cal 5 mdq	5	✓	100.0	100.9	100.9
cal 6 mdq	6	✓	250.0	258.5	103.4
cal 7 mdq	7	✓	500.0	481.2	96.2
cal 8 mdq	8	✓	1000.0	895.7	89.6

Compound Calibration Report

Batch results D:\MassHunter\Data\2024\lam 27-28\022824\QuantResults\lam 28.batch.bin
Last Cal. Update 3/5/2024 9:43 AM
Analyst Name ISP\datastor
Analyte Clonazepam **Internal Standard** Clonazepam-D4

Clonazepam - 8 Levels, 8 Levels Used, 8 Points, 8 Points Used, 4 QCs



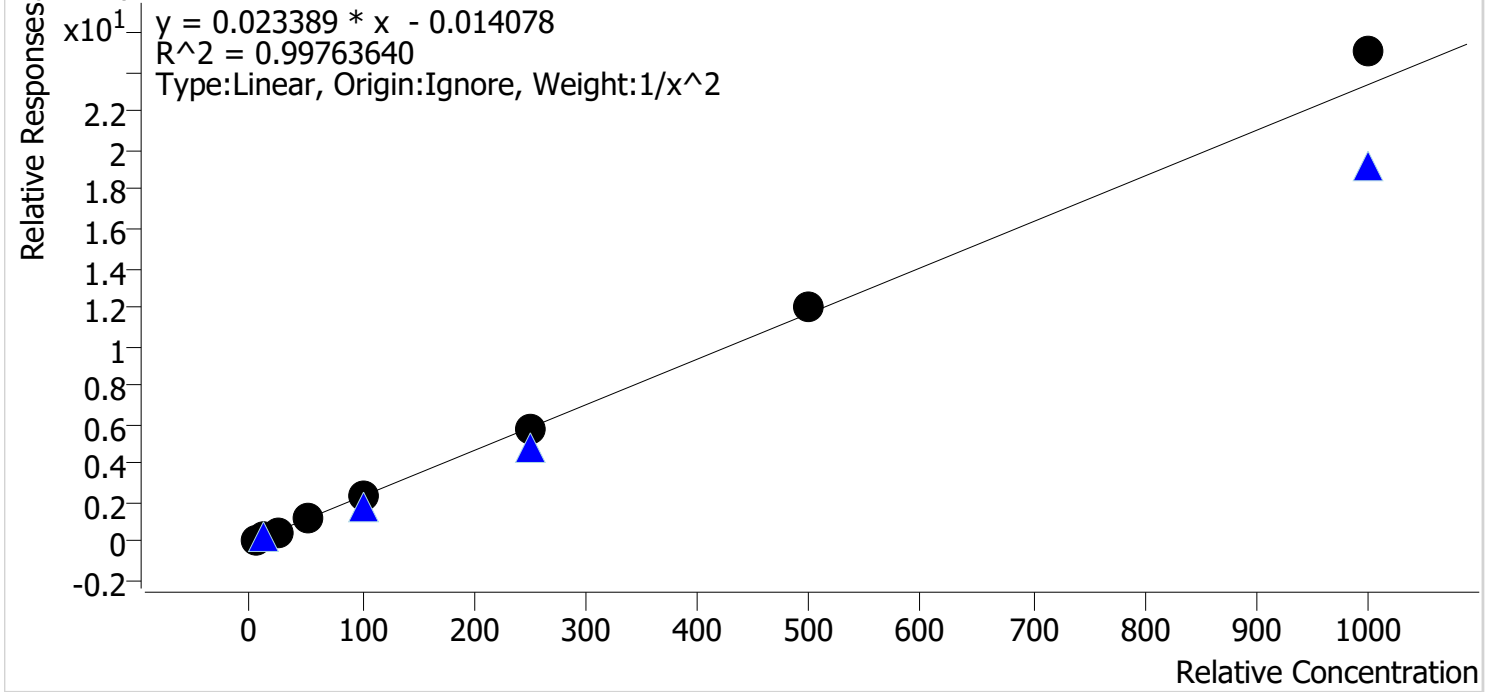
Sample	Level	Enabled	Expected Concentration	Final Concentration	Accuracy
cal 1 mdq	1	✓	5.0	4.8	96.9
cal 2 mdq	2	✓	10.0	10.4	104.1
cal 3 mdq	3	✓	25.0	26.6	106.5
cal 4 mdq	4	✓	50.0	49.0	97.9
cal 5 mdq	5	✓	100.0	101.6	101.6
cal 6 mdq	6	✓	250.0	239.5	95.8
cal 7 mdq	7	✓	500.0	499.4	99.9
cal 8 mdq	8	✓	1000.0	972.7	97.3



Compound Calibration Report

Batch results D:\MassHunter\Data\2024\am 27-28\022824\QuantResults\am 28.batch.bin
Last Cal. Update 3/5/2024 9:43 AM
Analyst Name ISP\datastor
Analyte Diphenhydramine **Internal Standard** Diphenhydramine-D3

Diphenhydramine - 8 Levels, 8 Levels Used, 8 Points, 8 Points Used, 4 QCs

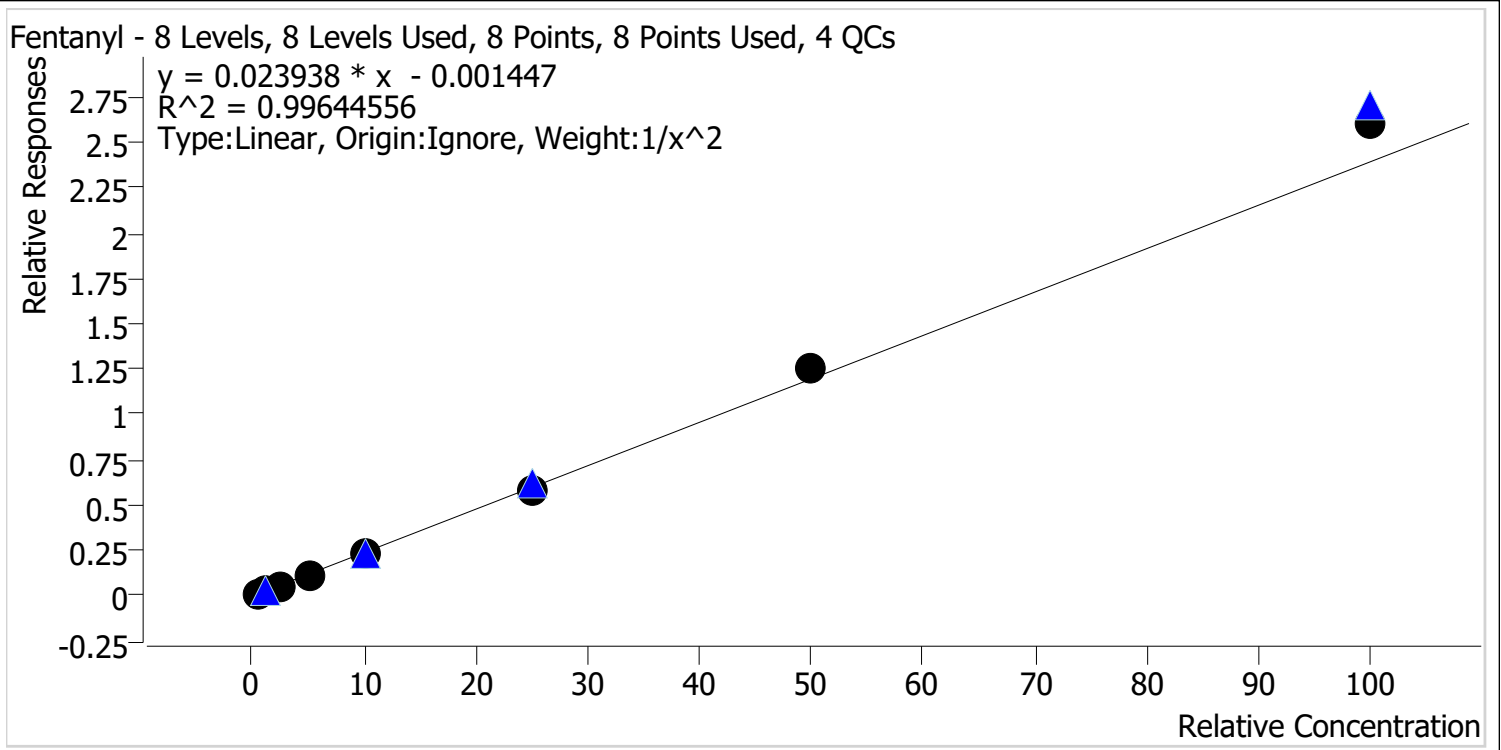


Sample	Level	Enabled	Expected Concentration	Final Concentration	Accuracy
cal 1 mdq	1	✓	5.0	5.1	102.6
cal 2 mdq	2	✓	10.0	9.8	97.6
cal 3 mdq	3	✓	25.0	23.4	93.4
cal 4 mdq	4	✓	50.0	49.6	99.3
cal 5 mdq	5	✓	100.0	97.1	97.1
cal 6 mdq	6	✓	250.0	249.6	99.8
cal 7 mdq	7	✓	500.0	514.2	102.8
cal 8 mdq	8	✓	1000.0	1072.2	107.2



Compound Calibration Report

Batch results D:\MassHunter\Data\2024\1m 27-28\022824\QuantResults\1m 28.batch.bin
Last Cal. Update 3/5/2024 9:43 AM
Analyst Name ISP\datastor
Analyte Fentanyl **Internal Standard** Fentanyl-D5

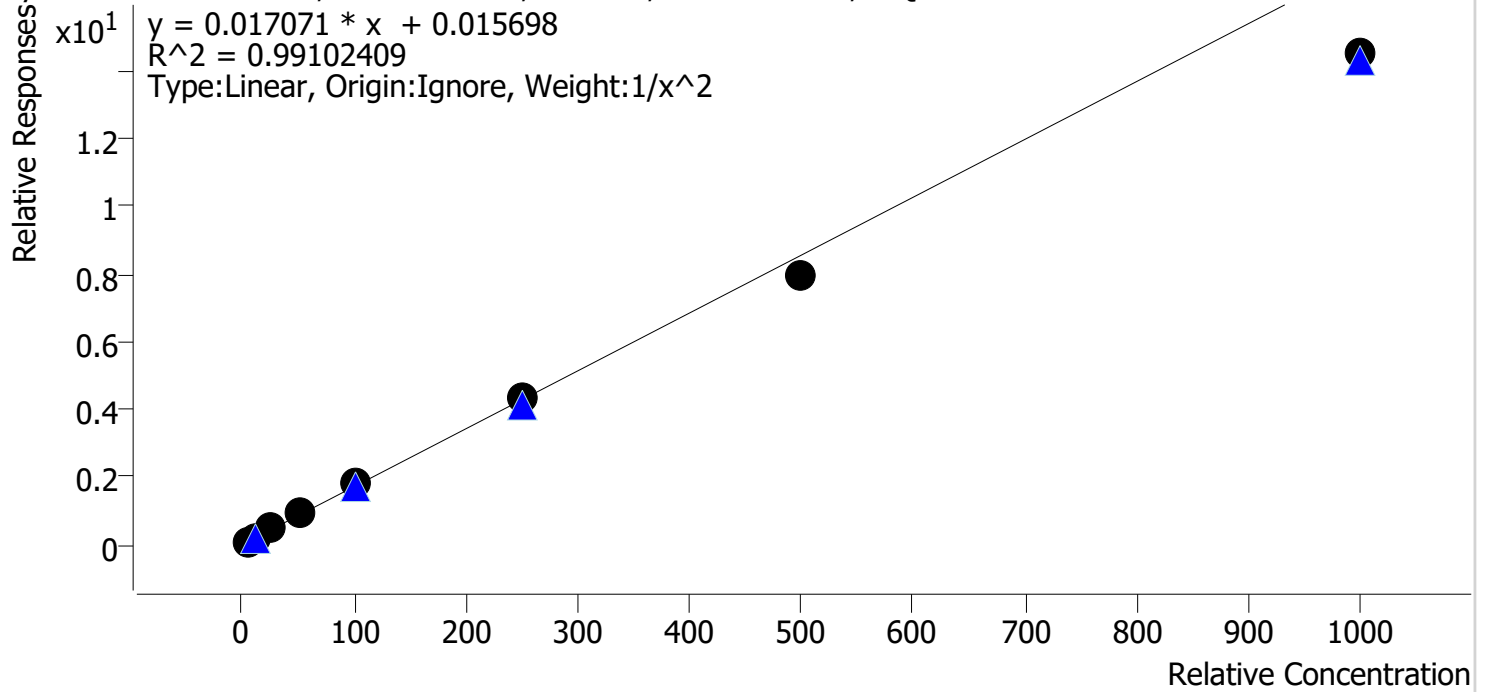


Sample	Level	Enabled	Expected Concentration	Final Concentration	Accuracy
cal 1 mdq	1	✓	0.5	0.5	102.7
cal 2 mdq	2	✓	1.0	1.0	97.1
cal 3 mdq	3	✓	2.5	2.4	97.6
cal 4 mdq	4	✓	5.0	4.6	92.6
cal 5 mdq	5	✓	10.0	9.7	97.3
cal 6 mdq	6	✓	25.0	24.7	98.7
cal 7 mdq	7	✓	50.0	52.6	105.1
cal 8 mdq	8	✓	100.0	108.8	108.8

Compound Calibration Report

Batch results D:\MassHunter\Data\2024\lam 27-28\022824\QuantResults\lam 28.batch.bin
Last Cal. Update 3/5/2024 9:43 AM
Analyst Name ISP\datastor
Analyte Hydrocodone **Internal Standard** Hydrocodone-D6

Hydrocodone - 8 Levels, 8 Levels Used, 8 Points, 8 Points Used, 4 QCs

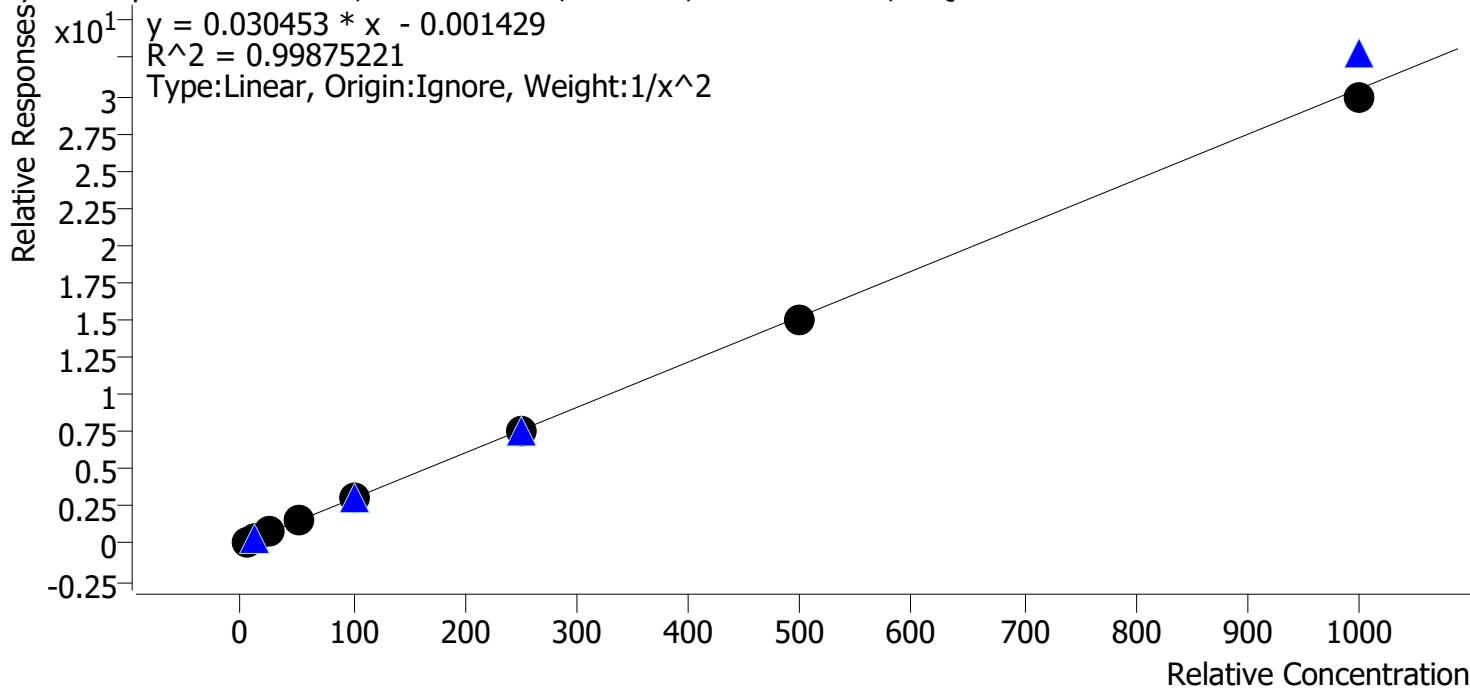


Sample	Level	Enabled	Expected Concentration	Final Concentration	Accuracy
cal 1 mdq	1	✓	5.0	4.8	95.3
cal 2 mdq	2	✓	10.0	10.5	105.2
cal 3 mdq	3	✓	25.0	26.4	105.7
cal 4 mdq	4	✓	50.0	53.1	106.2
cal 5 mdq	5	✓	100.0	108.8	108.8
cal 6 mdq	6	✓	250.0	252.1	100.8
cal 7 mdq	7	✓	500.0	465.2	93.0
cal 8 mdq	8	✓	1000.0	848.3	84.8

Compound Calibration Report

Batch results D:\MassHunter\Data\2024\lam 27-28\022824\QuantResults\lam 28.batch.bin
Last Cal. Update 3/5/2024 9:43 AM
Analyst Name ISP\datastor
Analyte Hydromorphone **Internal Standard** Hydromorphone-D6

Hydromorphone - 8 Levels, 8 Levels Used, 8 Points, 8 Points Used, 4 QCs



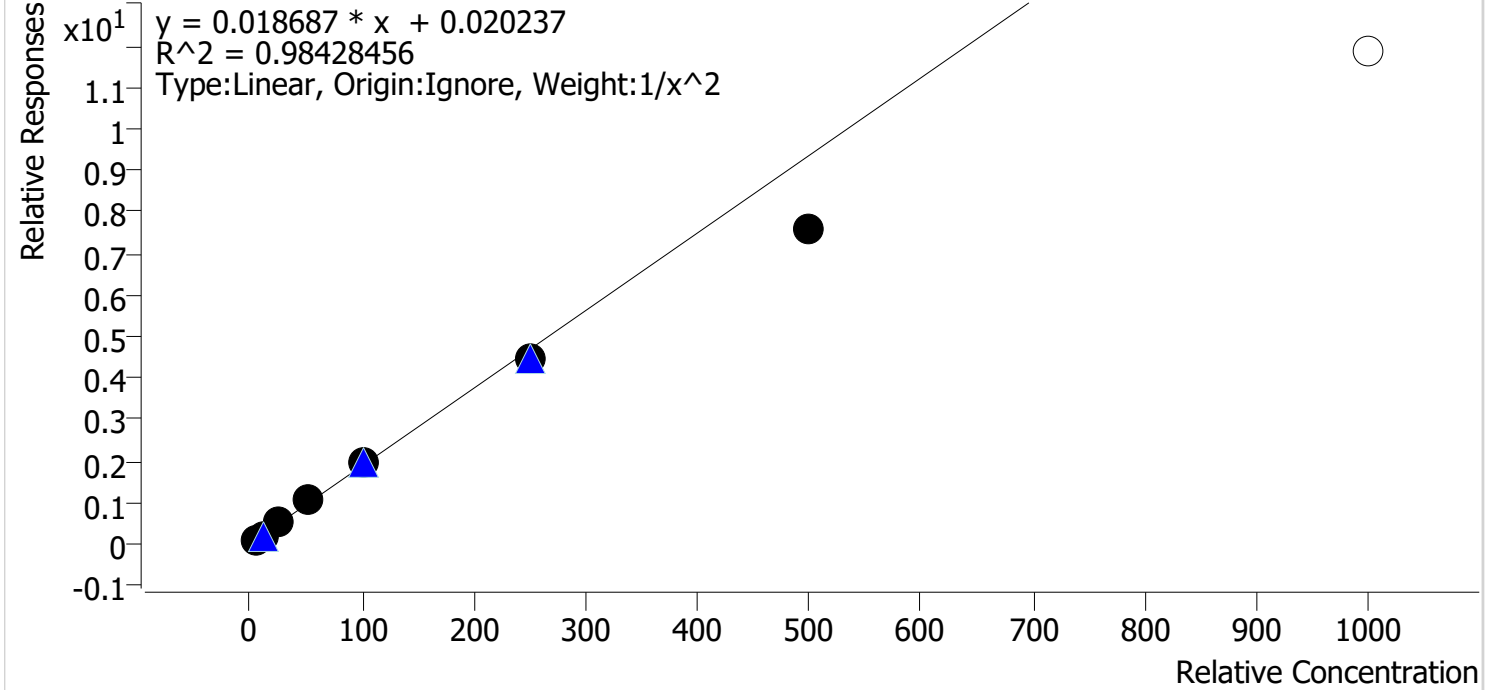
Sample	Level	Enabled	Expected Concentration	Final Concentration	Accuracy
cal 1 mdq	1	✓	5.0	4.9	98.6
cal 2 mdq	2	✓	10.0	10.0	100.0
cal 3 mdq	3	✓	25.0	26.6	106.5
cal 4 mdq	4	✓	50.0	51.3	102.6
cal 5 mdq	5	✓	100.0	98.8	98.8
cal 6 mdq	6	✓	250.0	244.8	97.9
cal 7 mdq	7	✓	500.0	489.9	98.0
cal 8 mdq	8	✓	1000.0	977.3	97.7



Compound Calibration Report

Batch results D:\MassHunter\Data\2024\lam 27-28\022824\QuantResults\lam 28.batch.bin
Last Cal. Update 3/5/2024 9:43 AM
Analyst Name ISP\datastor
Analyte Ketamine **Internal Standard** Ketamine-D4

Ketamine - 8 Levels, 7 Levels Used, 8 Points, 7 Points Used, 4 QCs

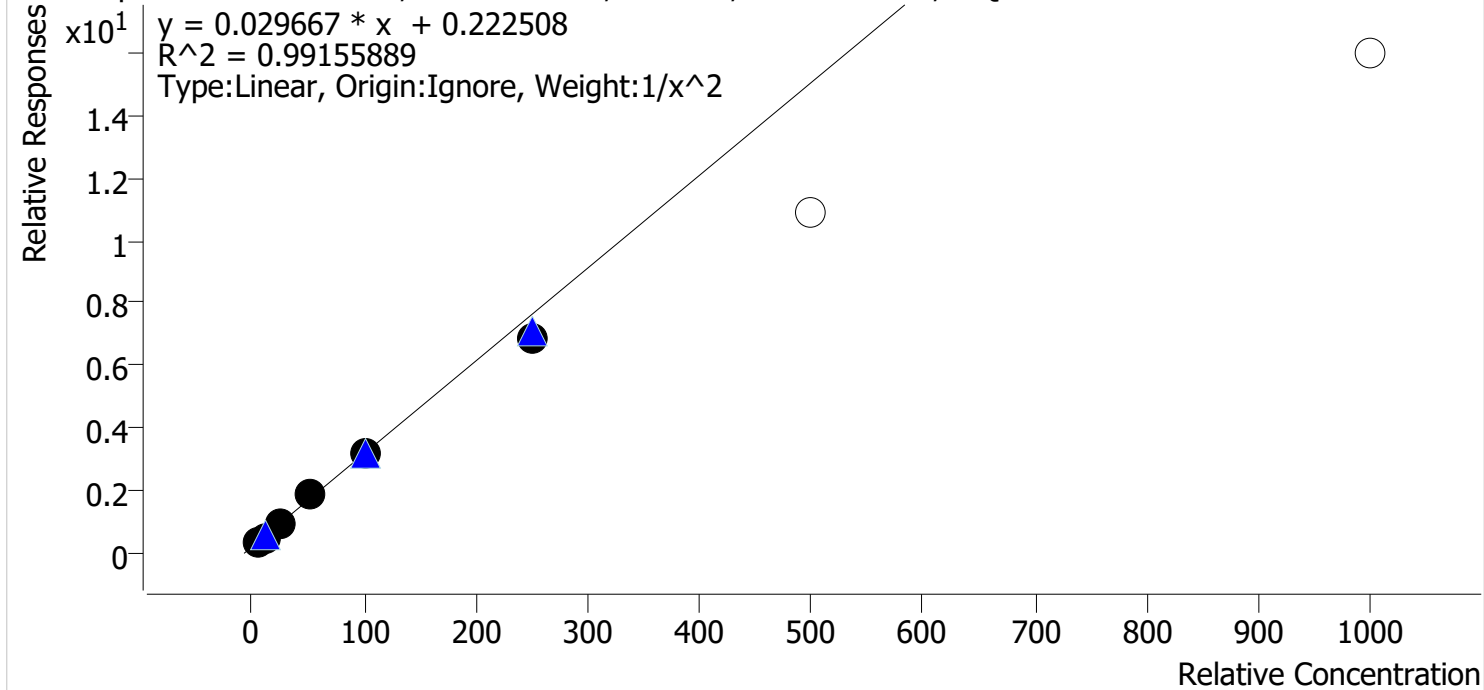


Sample	Level	Enabled	Expected Concentration	Final Concentration	Accuracy
cal 1 mdq	1	✓	5.0	4.7	93.9
cal 2 mdq	2	✓	10.0	10.6	106.1
cal 3 mdq	3	✓	25.0	27.7	110.7
cal 4 mdq	4	✓	50.0	55.1	110.2
cal 5 mdq	5	✓	100.0	103.3	103.3
cal 6 mdq	6	✓	250.0	236.6	94.6
cal 7 mdq	7	✓	500.0	406.0	81.2
cal 8 mdq	8	x	1000.0	633.6	63.4

Compound Calibration Report

Batch results	D:\MassHunter\Data\2024\lam 27-28\022824\QuantResults\lam 28.batch.bin		
Last Cal. Update	3/5/2024 9:43 AM		
Analyst Name	ISP\datastor		
Analyte	Methamphetamine	Internal Standard	Methamphetamine-D11

Methamphetamine - 8 Levels, 6 Levels Used, 8 Points, 6 Points Used, 4 QCs

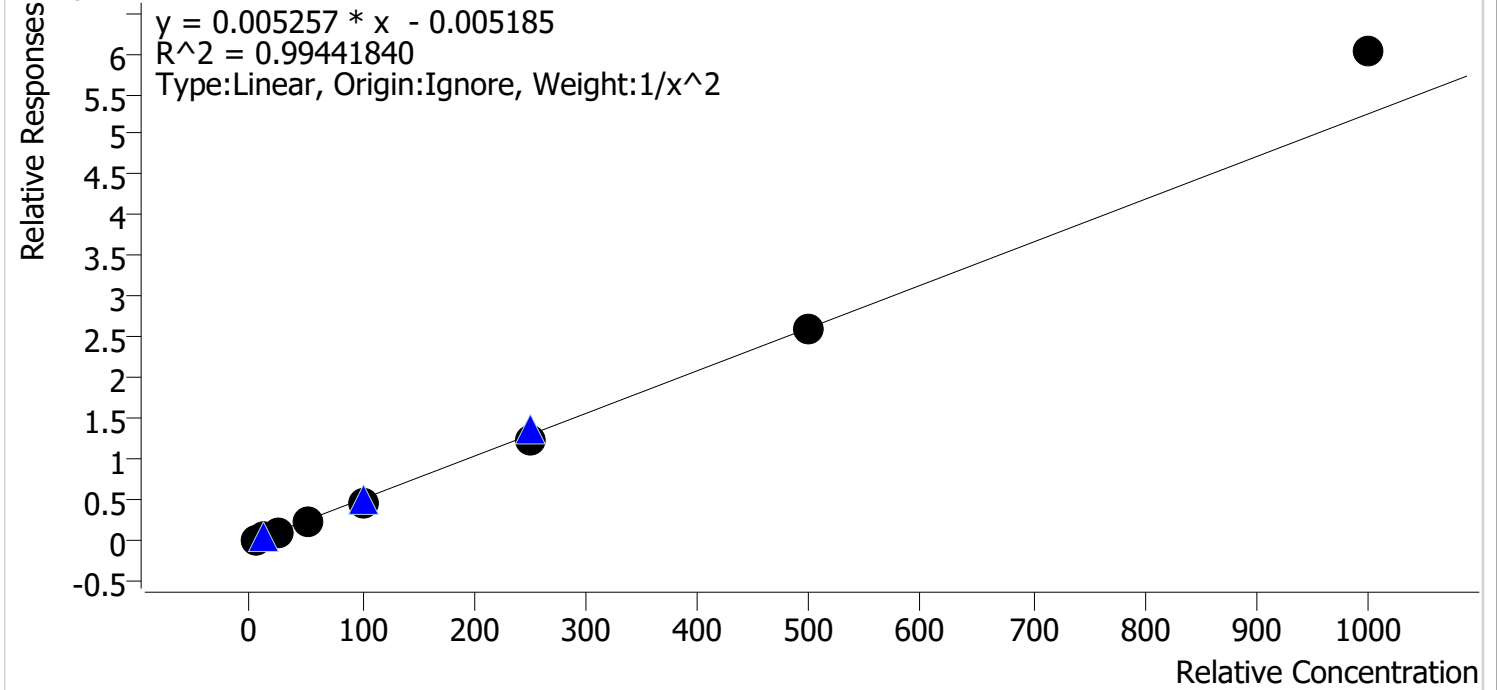


Sample	Level	Enabled	Expected Concentration	Final Concentration	Accuracy
cal 1 mdq	1	✓	5.0	5.1	101.5
cal 2 mdq	2	✓	10.0	9.3	93.4
cal 3 mdq	3	✓	25.0	26.3	105.2
cal 4 mdq	4	✓	50.0	54.8	109.5
cal 5 mdq	5	✓	100.0	101.2	101.2
cal 6 mdq	6	✓	250.0	223.0	89.2
cal 7 mdq	7	✗	500.0	360.2	72.0
cal 8 mdq	8	✗	1000.0	531.1	53.1

Compound Calibration Report

Batch results D:\MassHunter\Data\2024\lam 27-28\022824\QuantResults\lam 28.batch.bin
Last Cal. Update 3/5/2024 9:43 AM
Analyst Name ISP\datastor
Analyte Metoprolol **Internal Standard** Citalopram-D6

Metoprolol - 8 Levels, 8 Levels Used, 8 Points, 8 Points Used, 4 QCs

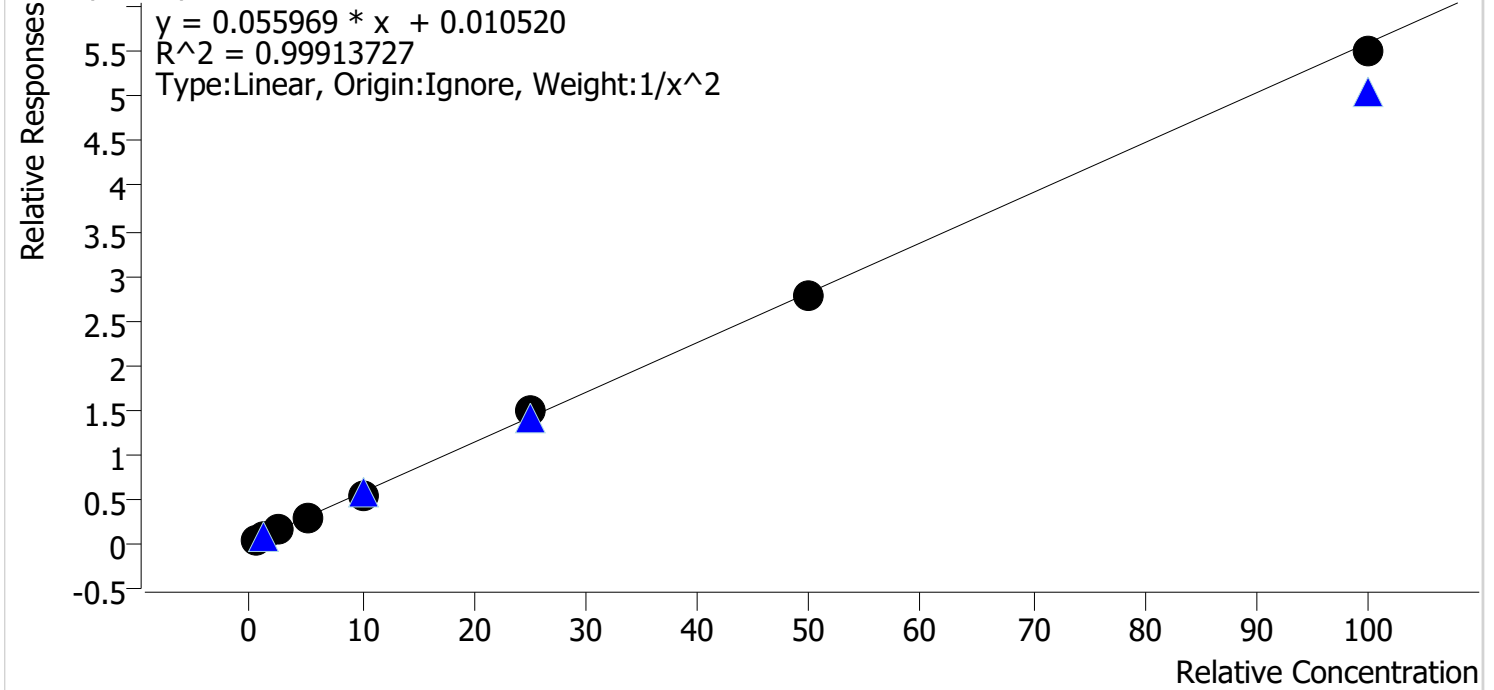


Sample	Level	Enabled	Expected Concentration	Final Concentration	Accuracy
cal 1 mdq	1	✓	5.0	5.0	100.7
cal 2 mdq	2	✓	10.0	10.0	100.0
cal 3 mdq	3	✓	25.0	25.1	100.4
cal 4 mdq	4	✓	50.0	47.5	95.1
cal 5 mdq	5	✓	100.0	94.1	94.1
cal 6 mdq	6	✓	250.0	237.6	95.0
cal 7 mdq	7	✓	500.0	500.7	100.1
cal 8 mdq	8	✓	1000.0	1145.4	114.5

Compound Calibration Report

Batch results	D:\MassHunter\Data\2024\lam 27-28\022824\QuantResults\lam 28.batch.bin		
Last Cal. Update	3/5/2024 9:43 AM		
Analyst Name	ISP\datastor		
Analyte	Norbuprenorphine	Internal Standard	Norbuprenorphine-D3

Norbuprenorphine - 8 Levels, 8 Levels Used, 8 Points, 8 Points Used, 4 QCs

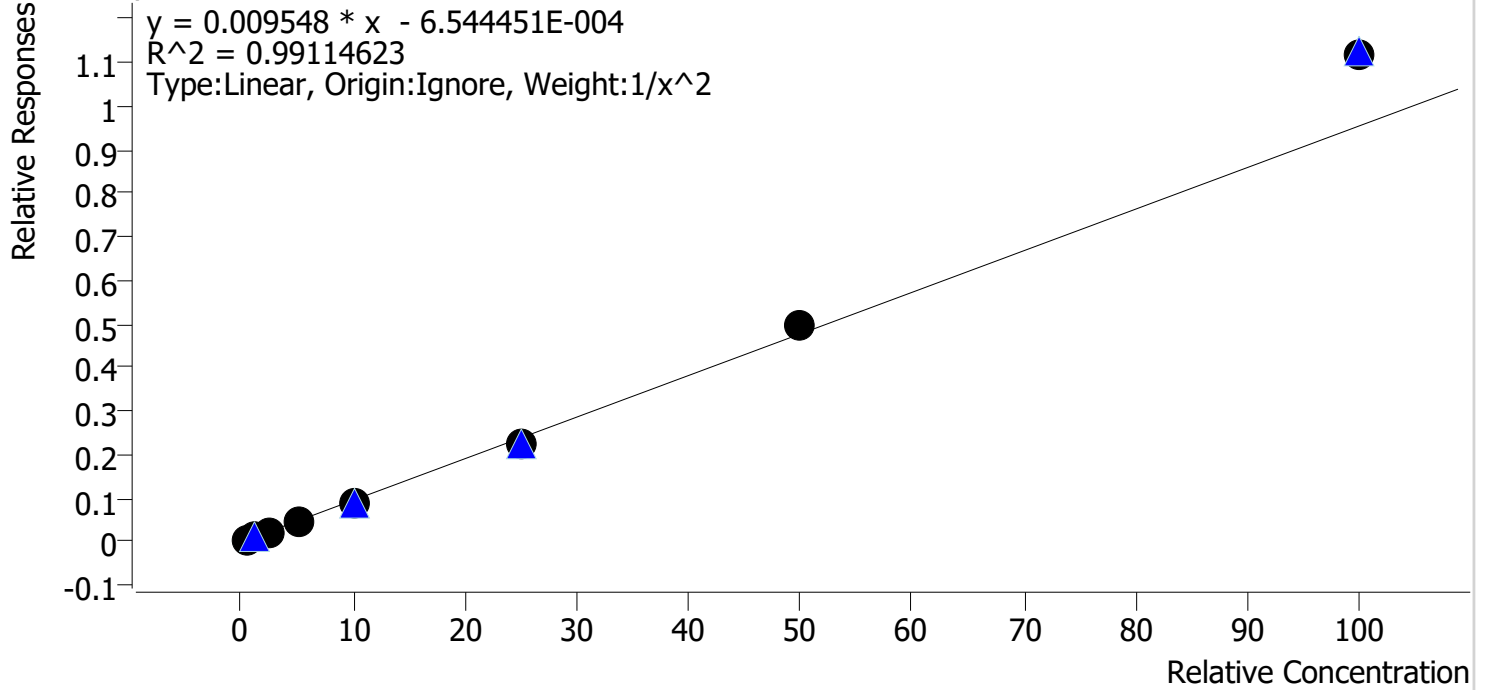


Sample	Level	Enabled	Expected Concentration	Final Concentration	Accuracy
cal 1 mdq	1	✓	0.5	0.5	99.2
cal 2 mdq	2	✓	1.0	1.0	101.4
cal 3 mdq	3	✓	2.5	2.5	101.1
cal 4 mdq	4	✓	5.0	5.0	99.9
cal 5 mdq	5	✓	10.0	9.6	96.2
cal 6 mdq	6	✓	25.0	26.2	104.8
cal 7 mdq	7	✓	50.0	49.6	99.1
cal 8 mdq	8	✓	100.0	98.3	98.3

Compound Calibration Report

Batch results D:\MassHunter\Data\2024\am 27-28\022824\QuantResults\am 28.batch.bin
Last Cal. Update 3/5/2024 9:43 AM
Analyst Name ISP\datastor
Analyte Norfentanyl **Internal Standard** Norfentanyl-D5

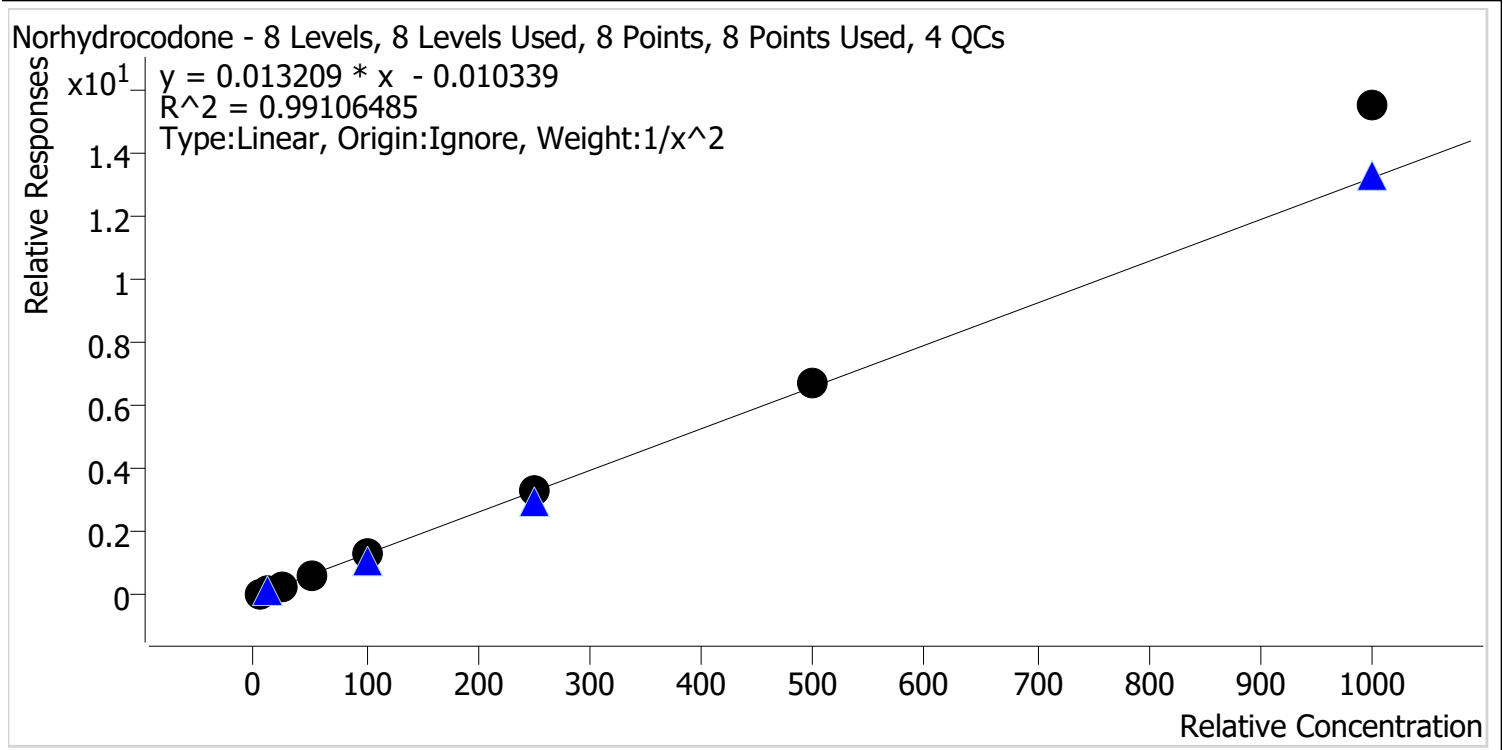
Norfentanyl - 8 Levels, 8 Levels Used, 8 Points, 8 Points Used, 4 QCs



Sample	Level	Enabled	Expected Concentration	Final Concentration	Accuracy
cal 1 mdq	1	✓	0.5	0.5	104.4
cal 2 mdq	2	✓	1.0	0.9	94.5
cal 3 mdq	3	✓	2.5	2.4	96.0
cal 4 mdq	4	✓	5.0	4.7	93.6
cal 5 mdq	5	✓	10.0	9.5	94.5
cal 6 mdq	6	✓	25.0	24.0	95.9
cal 7 mdq	7	✓	50.0	51.8	103.6
cal 8 mdq	8	✓	100.0	117.5	117.5

Compound Calibration Report

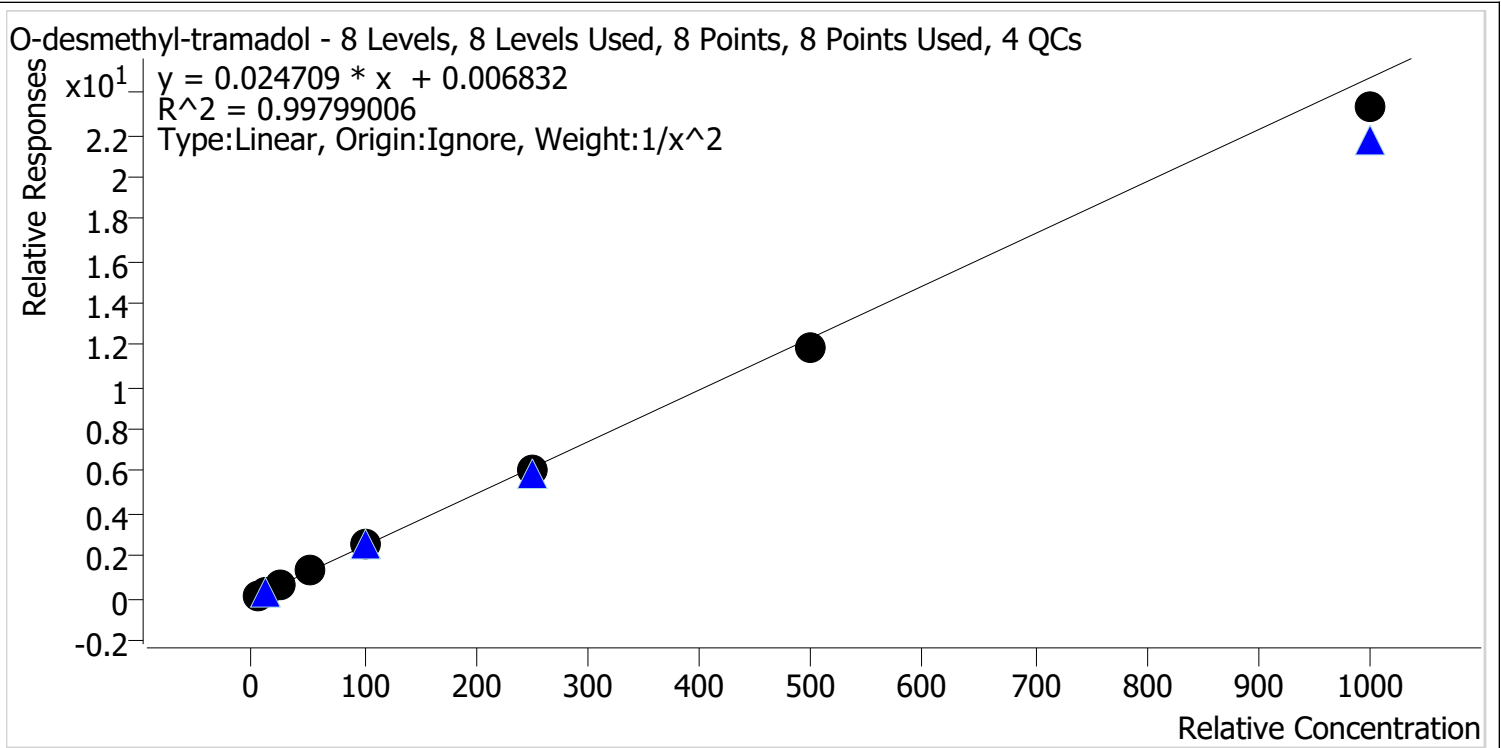
Batch results D:\MassHunter\Data\2024\lam 27-28\022824\QuantResults\lam 28.batch.bin
Last Cal. Update 3/5/2024 9:43 AM
Analyst Name ISP\datastor
Analyte Norhydrocodone **Internal Standard** Norhydrocodone-D3



Sample	Level	Enabled	Expected Concentration	Final Concentration	Accuracy
cal 1 mdq	1	✓	5.0	5.3	105.2
cal 2 mdq	2	✓	10.0	9.4	93.9
cal 3 mdq	3	✓	25.0	23.3	93.0
cal 4 mdq	4	✓	50.0	46.2	92.5
cal 5 mdq	5	✓	100.0	97.8	97.8
cal 6 mdq	6	✓	250.0	248.3	99.3
cal 7 mdq	7	✓	500.0	505.2	101.0
cal 8 mdq	8	✓	1000.0	1172.8	117.3

Compound Calibration Report

Batch results	D:\MassHunter\Data\2024\am 27-28\022824\QuantResults\am 28.batch.bin		
Last Cal. Update	3/5/2024 9:43 AM		
Analyst Name	ISP\datastor		
Analyte	O-desmethyl-tramadol	Internal Standard	O-desmethyl-tramadol-D6



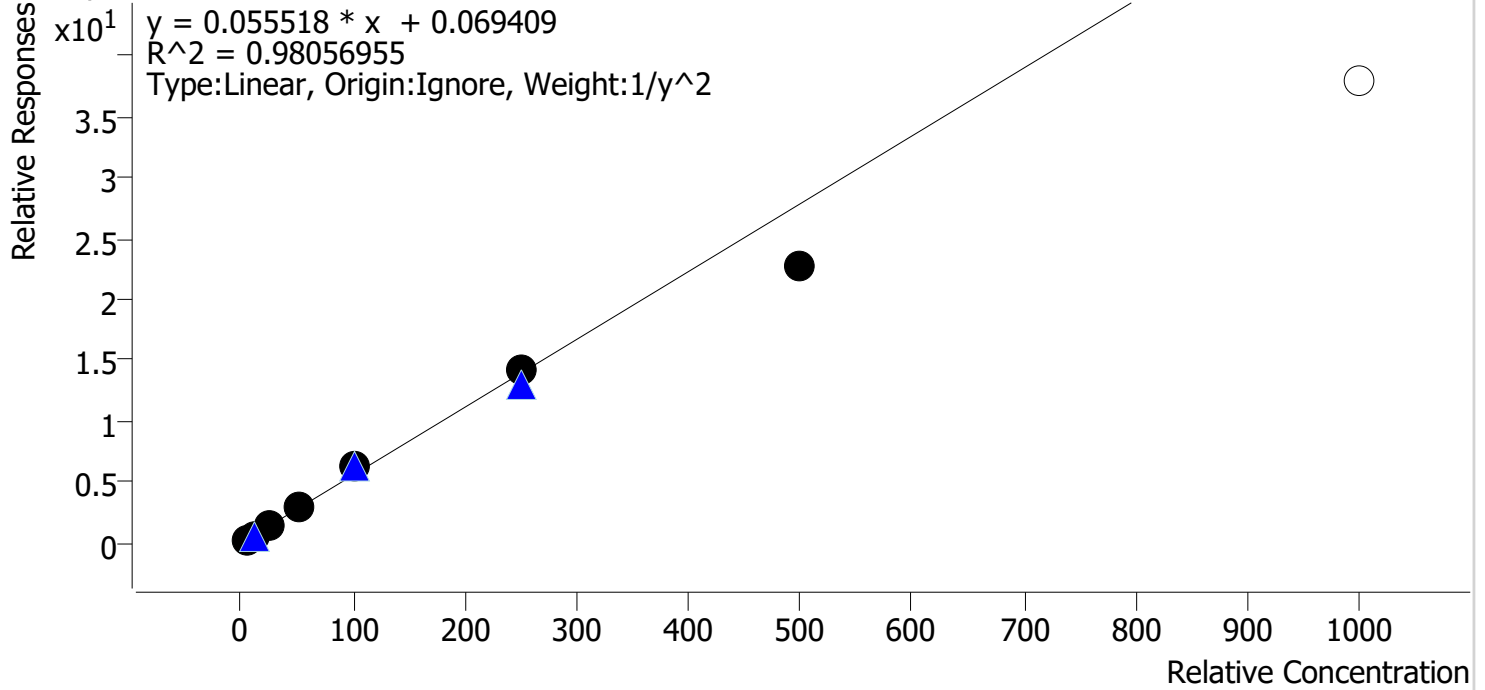
Sample	Level	Enabled	Expected Concentration	Final Concentration	Accuracy
cal 1 mdq	1	✓	5.0	4.9	98.5
cal 2 mdq	2	✓	10.0	10.0	100.0
cal 3 mdq	3	✓	25.0	26.1	104.2
cal 4 mdq	4	✓	50.0	52.9	105.8
cal 5 mdq	5	✓	100.0	101.7	101.7
cal 6 mdq	6	✓	250.0	248.3	99.3
cal 7 mdq	7	✓	500.0	479.8	96.0
cal 8 mdq	8	✓	1000.0	943.2	94.3

Compound Calibration Report

Batch results D:\MassHunter\Data\2024\lam 27-28\022824\QuantResults\lam 28.batch.bin
Last Cal. Update 3/5/2024 9:43 AM
Analyst Name ISP\datastor
Analyte Quetiapine

Internal Standard Quetiapine-D8

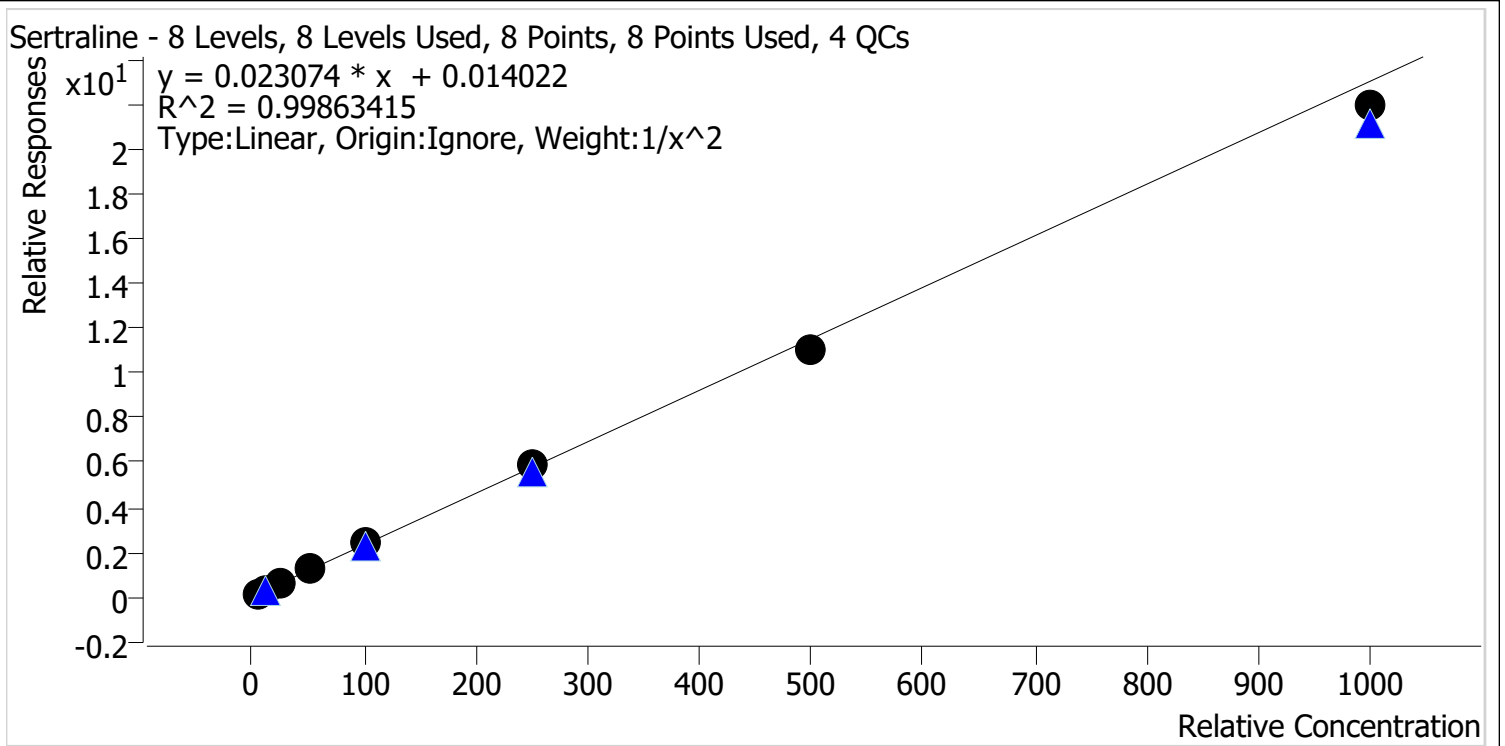
Quetiapine - 8 Levels, 7 Levels Used, 8 Points, 7 Points Used, 4 QCs



Sample	Level	Enabled	Expected Concentration	Final Concentration	Accuracy
cal 1 mdq	1	✓	5.0	4.7	93.4
cal 2 mdq	2	✓	10.0	10.5	105.1
cal 3 mdq	3	✓	25.0	28.2	112.8
cal 4 mdq	4	✓	50.0	55.1	110.3
cal 5 mdq	5	✓	100.0	111.5	111.5
cal 6 mdq	6	✓	250.0	252.6	101.0
cal 7 mdq	7	✓	500.0	410.7	82.1
cal 8 mdq	8	✗	1000.0	679.3	67.9

Compound Calibration Report

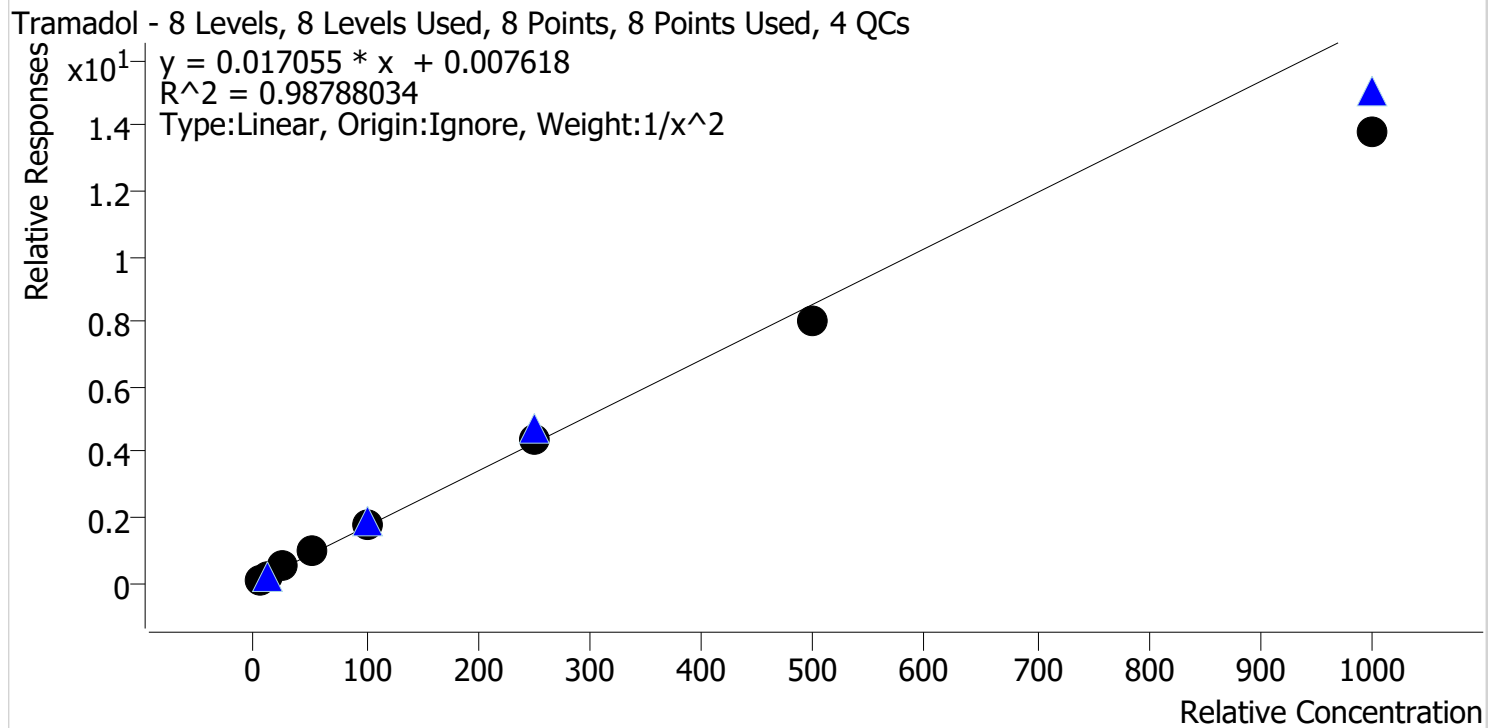
Batch results D:\MassHunter\Data\2024\am 27-28\022824\QuantResults\am 28.batch.bin
Last Cal. Update 3/5/2024 9:43 AM
Analyst Name ISP\datastor
Analyte Sertraline **Internal Standard** Sertraline-D3



Sample	Level	Enabled	Expected Concentration	Final Concentration	Accuracy
cal 1 mdq	1	✓	5.0	5.0	99.9
cal 2 mdq	2	✓	10.0	9.9	98.8
cal 3 mdq	3	✓	25.0	25.0	100.2
cal 4 mdq	4	✓	50.0	52.3	104.7
cal 5 mdq	5	✓	100.0	103.3	103.3
cal 6 mdq	6	✓	250.0	253.5	101.4
cal 7 mdq	7	✓	500.0	481.7	96.3
cal 8 mdq	8	✓	1000.0	952.8	95.3

Compound Calibration Report

Batch results D:\MassHunter\Data\2024\1am 27-28\022824\QuantResults\1am 28.batch.bin
Last Cal. Update 3/5/2024 9:43 AM
Analyst Name ISP\datastor
Analyte Tramadol **Internal Standard** Tramadol-13C-D3

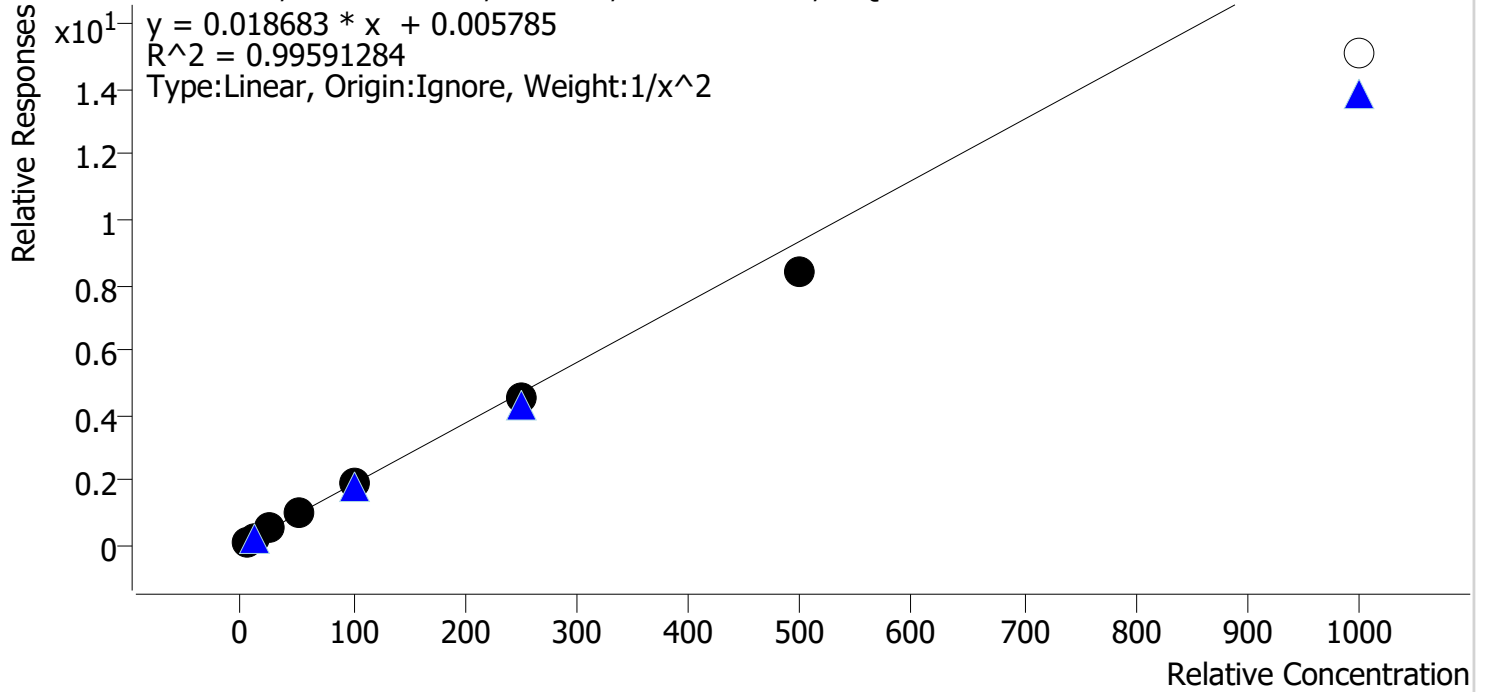


Sample	Level	Enabled	Expected Concentration	Final Concentration	Accuracy
cal 1 mdq	1	✓	5.0	4.8	95.2
cal 2 mdq	2	✓	10.0	10.4	103.7
cal 3 mdq	3	✓	25.0	27.3	109.1
cal 4 mdq	4	✓	50.0	55.1	110.1
cal 5 mdq	5	✓	100.0	104.2	104.2
cal 6 mdq	6	✓	250.0	255.9	102.4
cal 7 mdq	7	✓	500.0	472.7	94.5
cal 8 mdq	8	✓	1000.0	807.3	80.7

Compound Calibration Report

Batch results D:\MassHunter\Data\2024\lam 27-28\022824\QuantResults\lam 28.batch.bin
Last Cal. Update 3/5/2024 9:43 AM
Analyst Name ISP\datastor
Analyte Trazodone **Internal Standard** Trazodone-D6

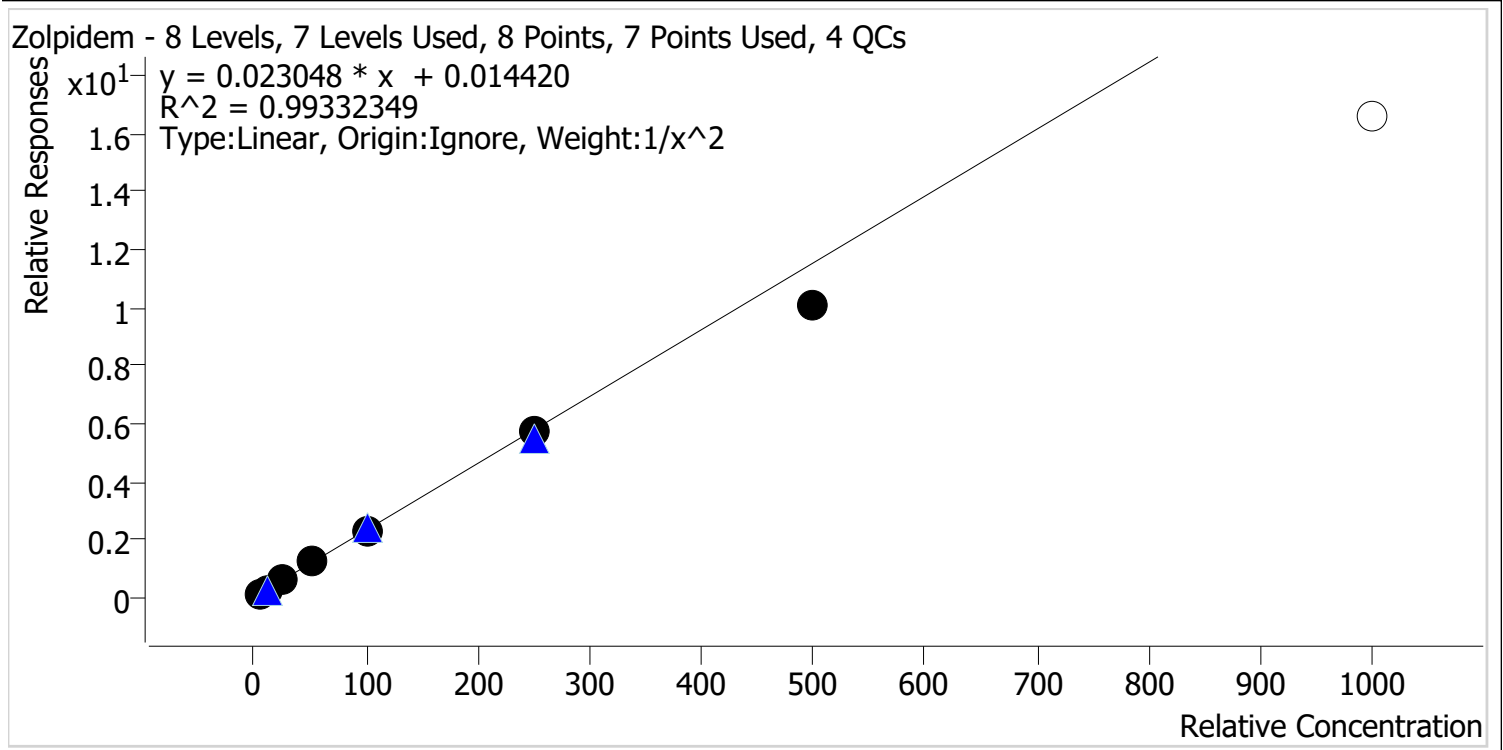
Trazodone - 8 Levels, 7 Levels Used, 8 Points, 7 Points Used, 4 QCs



Sample	Level	Enabled	Expected Concentration	Final Concentration	Accuracy
cal 1 mdq	1	✓	5.0	4.9	97.8
cal 2 mdq	2	✓	10.0	10.1	100.8
cal 3 mdq	3	✓	25.0	26.7	106.8
cal 4 mdq	4	✓	50.0	51.9	103.7
cal 5 mdq	5	✓	100.0	103.3	103.3
cal 6 mdq	6	✓	250.0	242.6	97.0
cal 7 mdq	7	✓	500.0	452.4	90.5
cal 8 mdq	8	✗	1000.0	808.6	80.9

Compound Calibration Report

Batch results D:\MassHunter\Data\2024\lam 27-28\022824\QuantResults\lam 28.batch.bin
Last Cal. Update 3/5/2024 9:43 AM
Analyst Name ISP\datastor
Analyte Zolpidem **Internal Standard** Zolpidem-D6

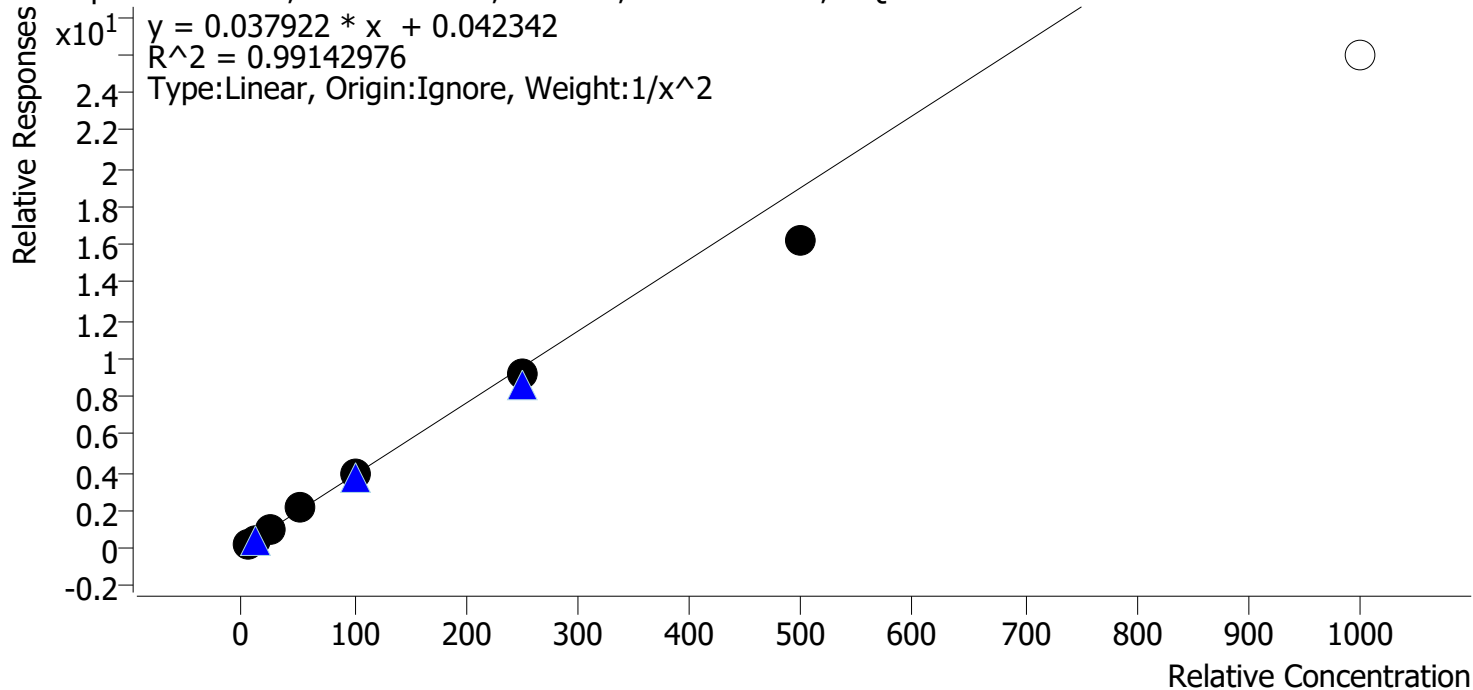


Sample	Level	Enabled	Expected Concentration	Final Concentration	Accuracy
cal 1 mdq	1	✓	5.0	4.8	96.0
cal 2 mdq	2	✓	10.0	10.4	103.9
cal 3 mdq	3	✓	25.0	26.9	107.7
cal 4 mdq	4	✓	50.0	53.0	105.9
cal 5 mdq	5	✓	100.0	100.8	100.8
cal 6 mdq	6	✓	250.0	245.8	98.3
cal 7 mdq	7	✓	500.0	436.8	87.4
cal 8 mdq	8	✗	1000.0	717.4	71.7

Compound Calibration Report

Batch results D:\MassHunter\Data\2024\lam 27-28\022824\QuantResults\lam 28.batch.bin
Last Cal. Update 3/5/2024 9:43 AM
Analyst Name ISP\datastor
Analyte Olanzapine **Internal Standard** Olanzapine-d8

Olanzapine - 8 Levels, 7 Levels Used, 8 Points, 7 Points Used, 4 QCs

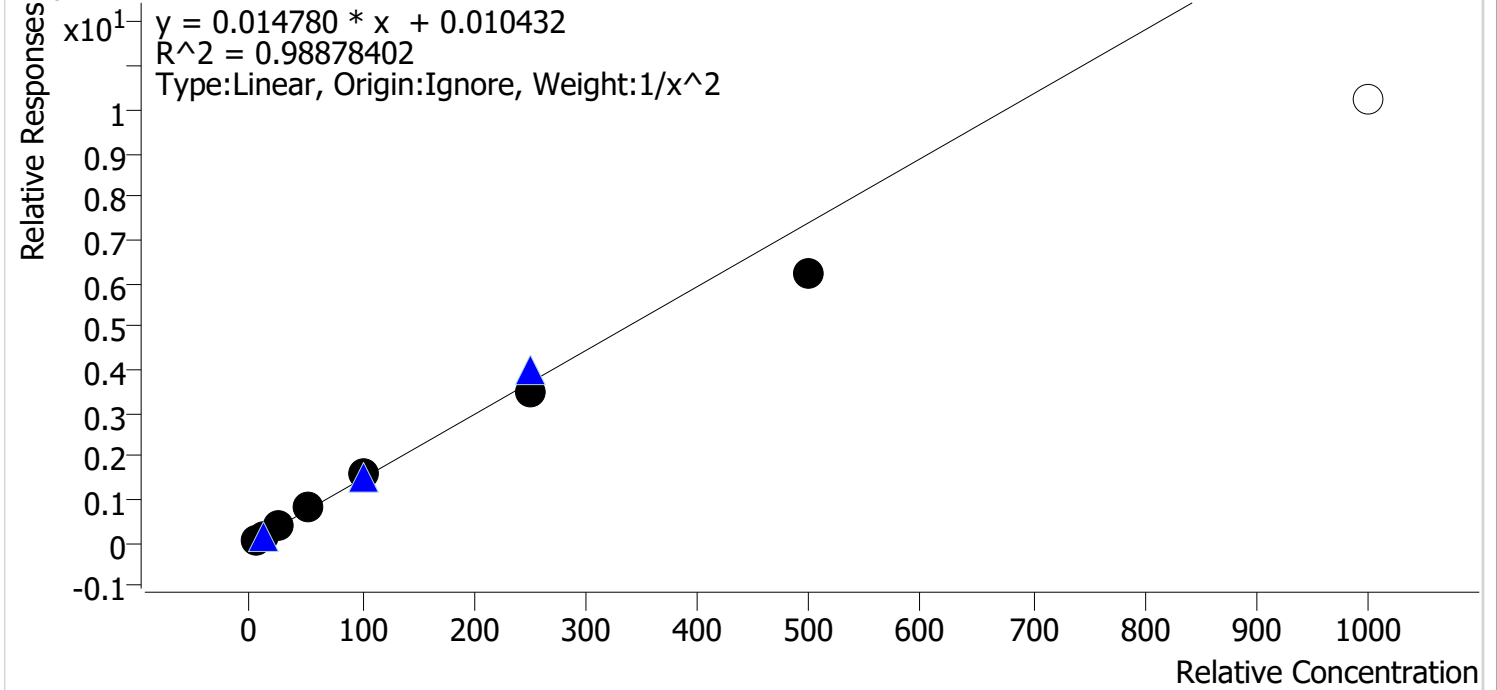


Sample	Level	Enabled	Expected Concentration	Final Concentration	Accuracy
cal 1 mdq	1	✓	5.0	4.9	97.1
cal 2 mdq	2	✓	10.0	10.1	101.1
cal 3 mdq	3	✓	25.0	27.0	107.9
cal 4 mdq	4	✓	50.0	54.1	108.1
cal 5 mdq	5	✓	100.0	103.6	103.6
cal 6 mdq	6	✓	250.0	241.3	96.5
cal 7 mdq	7	✓	500.0	428.1	85.6
cal 8 mdq	8	✗	1000.0	682.9	68.3

Compound Calibration Report

Batch results	D:\MassHunter\Data\2024\lam 27-28\022824\QuantResults\lam 28.batch.bin		
Last Cal. Update	3/5/2024 9:43 AM		
Analyst Name	ISP\datastor		
Analyte	Dihydrocodeine	Internal Standard	Dihydrocodeine-D6

Dihydrocodeine - 8 Levels, 7 Levels Used, 8 Points, 7 Points Used, 4 QCs

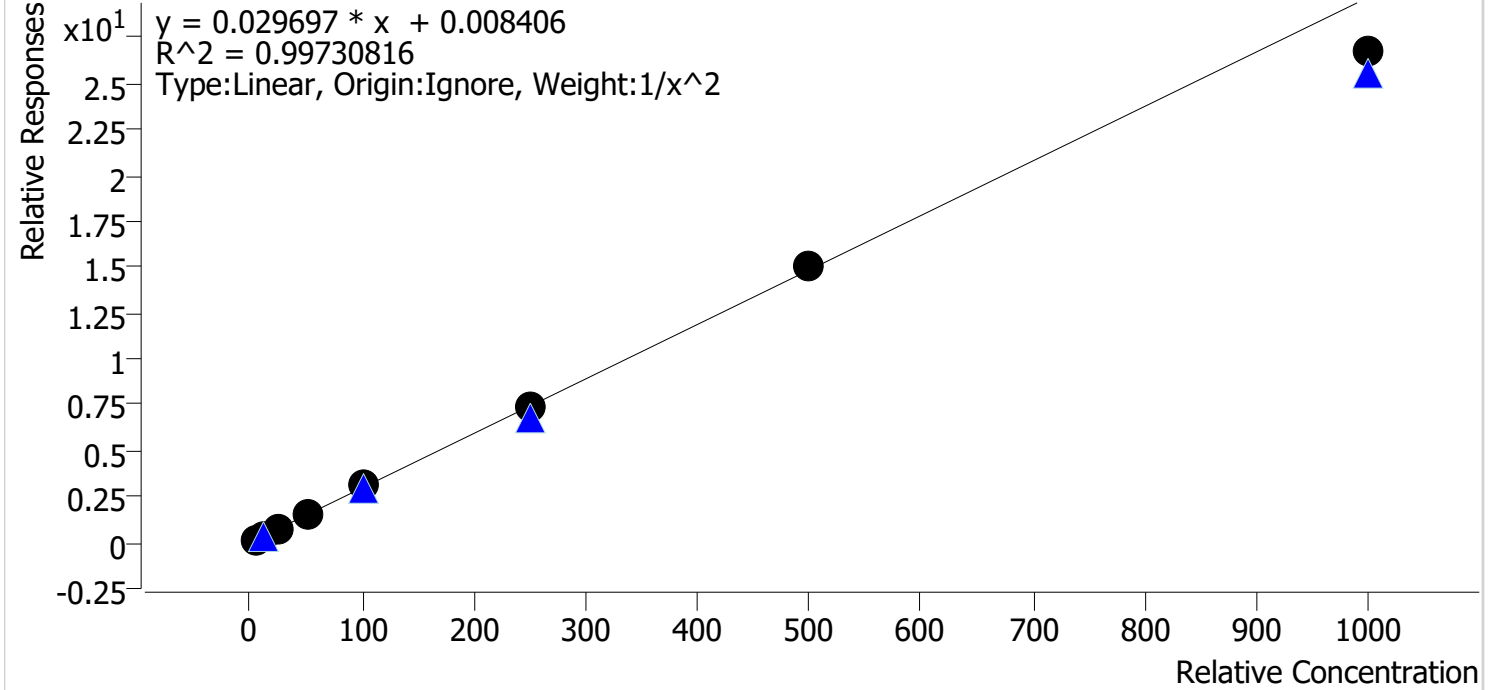


Sample	Level	Enabled	Expected Concentration	Final Concentration	Accuracy
cal 1 mdq	1	✓	5.0	4.9	97.4
cal 2 mdq	2	✓	10.0	10.0	100.0
cal 3 mdq	3	✓	25.0	27.1	108.5
cal 4 mdq	4	✓	50.0	53.9	107.7
cal 5 mdq	5	✓	100.0	107.6	107.6
cal 6 mdq	6	✓	250.0	237.3	94.9
cal 7 mdq	7	✓	500.0	418.9	83.8
cal 8 mdq	8	✗	1000.0	690.2	69.0

Compound Calibration Report

Batch results D:\MassHunter\Data\2024\lam 27-28\022824\QuantResults\lam 28.batch.bin
Last Cal. Update 3/5/2024 9:43 AM
Analyst Name ISP\datastor
Analyte Duloxetine **Internal Standard** Duloxetine-d3

Duloxetine - 8 Levels, 8 Levels Used, 8 Points, 8 Points Used, 4 QCs



Sample	Level	Enabled	Expected Concentration	Final Concentration	Accuracy
cal 1 mdq	1	✓	5.0	4.9	97.8
cal 2 mdq	2	✓	10.0	10.3	102.7
cal 3 mdq	3	✓	25.0	25.6	102.2
cal 4 mdq	4	✓	50.0	51.3	102.6
cal 5 mdq	5	✓	100.0	103.8	103.8
cal 6 mdq	6	✓	250.0	247.0	98.8
cal 7 mdq	7	✓	500.0	509.7	101.9
cal 8 mdq	8	✓	1000.0	900.7	90.1

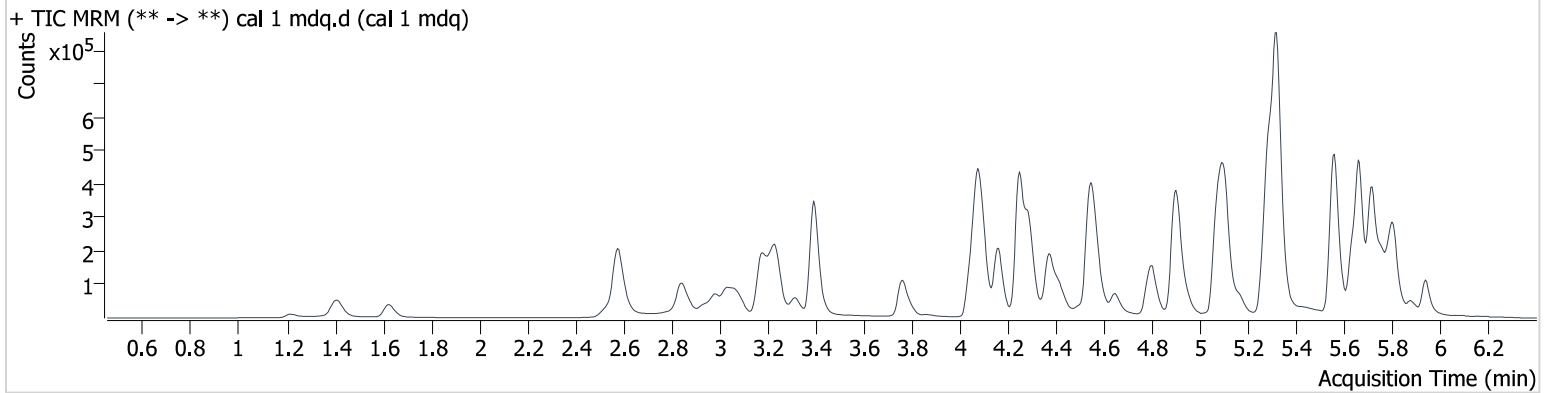
AM #28 Multi-Drug Quant. Results

Batch results D:\MassHunter\Data\2024\am 27-28\022824\QuantResults\am 28.batch.bin
Calibration Last Update 3/5/2024 9:43:10 AM

Instrument 69679
Type Cal
Acq. Method mdqp1 121523.m
Sample Position P2-A1
Injection Volume 3
Acq. Date-Time 2/28/2024 11:53:59 AM
Sample Info.

Data File cal 1 mdq.d
Sample cal 1 mdq
Operator Anne Nord
Comment Only drugs and concentrations listed on the laboratory report itself are appropriate to be used for interpretation purposes. Any drugs or values in the notes but not included on the report are used by laboratory personnel to make determinations/reach conclusions within the confines of the methods.

Sample Chromatogram



Name	RT	Resp.	S/N	Ratio	S/N	ISTD Resp.	Final Conc.
7-aminoclonazepam	4.273	4093	449.9	131.89	1311.0	90679	4.580 ng/ml
Amphetamine	3.069	36679	4229.6	270.80	68784.1	188953	4.262 ng/ml
Bupropion	4.809	64755	7235.0	67.13	1978.5	356694	4.930 ng/ml
Clonazepam	5.612	6861	850.2	31.83	494.2	27759	4.844 ng/ml
Dihydrocodeine	2.570	8660	19231.8	63.36	60.9	105082	4.870 ng/ml
Diphenhydramine	5.327	165460	4290.4	32.35	8322.2	1561482	5.132 ng/ml
Duloxetine	5.660	11171	299.5	8.25	121.5	72714	4.890 ng/ml
Fentanyl	5.116	4903	472.2	137.29	827.3	451942	0.514 ng/ml
Hydrocodone	3.060	20391	3861.7	39.83	2721.8	210096	4.766 ng/ml
Hydromorphone	1.633	14713	∞	67.25	5531957822	98949	4.930 ng/ml
Ketamine	4.062	38019	6040.4	38.07	3807.1	351985	4.697 ng/ml
Lamotrigine	4.336	2554	106.8	120.43	30.4	140523	4.803 ng/ml
Methamphetamine	3.242	180762	5831.3	37.06	17762.1	484566	5.074 ng/ml
Metoprolol	4.345	8631	6080.6	107.11	∞	405338	5.036 ng/ml
Norbuprenorphine	5.033	658	3238.3	102.48	5599.2	17193	0.496 ng/ml
Norfentanyl	4.103	3444	270.3	30.53	2345.4	795223	0.522 ng/ml
Norhydrocodone	3.112	3304	∞	20.31	70.1	55835	5.262 ng/ml
O-desmethyl-tramadol	3.399	105152	26558.4	7.67	1396.1	817805	4.927 ng/ml
Olanzapine	4.497	55159	60282.1	40.20	1388.1	243649	4.853 ng/ml
Quetiapine	5.569	86107	62767.5	65.05	27010.3	261929	4.671 ng/ml
Sertraline	5.788	24114	∞	94.22	∞	186477	4.997 ng/ml
Tramadol	4.259	77651	2174.8	4.05	92.0	874359	4.761 ng/ml
Trazodone	5.162	47549	5502.3	130.08	14839.1	489268	4.892 ng/ml
Zolpidem	4.921	118118	1155341.9	28.58	661797.2	944179	4.802 ng/ml

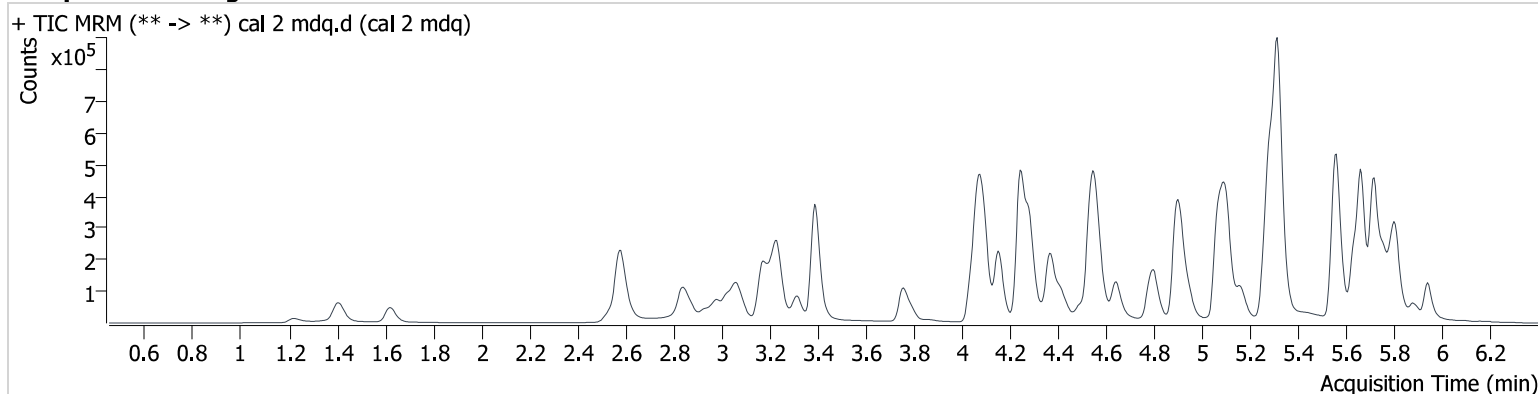
AM #28 Multi-Drug Quant. Results

Batch results D:\MassHunter\Data\2024\am 27-28\022824\QuantResults\am 28.batch.bin
Calibration Last Update 3/5/2024 9:43:10 AM

Instrument 69679
Type Cal
Acq. Method mdqp1 121523.m
Sample Position P2-B1
Injection Volume 3
Acq. Date-Time 2/28/2024 12:02:51 PM
Sample Info.

Data File cal 2 mdq.d
Sample cal 2 mdq
Operator Anne Nord
Comment Only drugs and concentrations listed on the laboratory report itself are appropriate to be used for interpretation purposes. Any drugs or values in the notes but not included on the report are used by laboratory personnel to make determinations/reach conclusions within the confines of the methods.

Sample Chromatogram



Name	RT	Resp.	S/N	Ratio	S/N	ISTD Resp.	Final Conc.
7-aminoclonazepam	4.268	10122	1227.8	119.15	2091.9	108040	11.340 ng/ml
Amphetamine	3.064	64266	2570.1	268.84	12848.3	180187	10.249 ng/ml
Bupropion	4.804	114109	12638.1	73.45	6807.7	324814	9.935 ng/ml
Clonazepam	5.612	15180	1655.4	34.09	1610.9	28554	10.408 ng/ml
Dihydrocodeine	2.570	16918	104.3	69.11	650.1	106918	10.000 ng/ml
Diphenhydramine	5.321	307256	13891.6	34.00	7251.8	1433691	9.765 ng/ml
Duloxetine	5.665	21431	204.6	7.81	1049.1	68384	10.270 ng/ml
Fentanyl	5.111	9336	1708.6	137.53	1339.6	428251	0.971 ng/ml
Hydrocodone	3.055	40062	2492.8	38.48	480.0	205071	10.524 ng/ml
Hydromorphone	1.628	30423	∞	72.00	∞	100396	9.997 ng/ml
Ketamine	4.057	72487	8210.2	36.76	3798.9	331829	10.607 ng/ml
Lamotrigine	4.331	5184	979.3	113.85	390.9	127336	10.671 ng/ml
Methamphetamine	3.237	233055	27916.7	36.68	3571.3	466587	9.336 ng/ml
Metoprolol	4.340	17922	168667.5	101.06	∞	378120	10.002 ng/ml
Norbuprenorphine	5.022	1148	5751.9	90.20	678.0	17061	1.014 ng/ml
Norfentanyl	4.098	6467	∞	30.08	9848.4	772788	0.945 ng/ml
Norhydrocodone	3.102	6056	∞	22.72	199.9	53284	9.386 ng/ml
O-desmethyl-tramadol	3.394	198204	45095.8	8.15	19621.6	780278	10.004 ng/ml
Olanzapine	4.492	109053	87363.0	40.55	400.2	256059	10.114 ng/ml
Quetiapine	5.563	166277	43596.9	67.62	115156.7	254753	10.506 ng/ml
Sertraline	5.788	41570	∞	87.45	∞	171711	9.885 ng/ml
Tramadol	4.254	151403	∞	4.10	647.5	820808	10.369 ng/ml
Trazodone	5.162	95239	19005.8	130.16	33284.7	490533	10.082 ng/ml
Zolpidem	4.921	230591	1622574.0	28.56	14798.1	908293	10.389 ng/ml

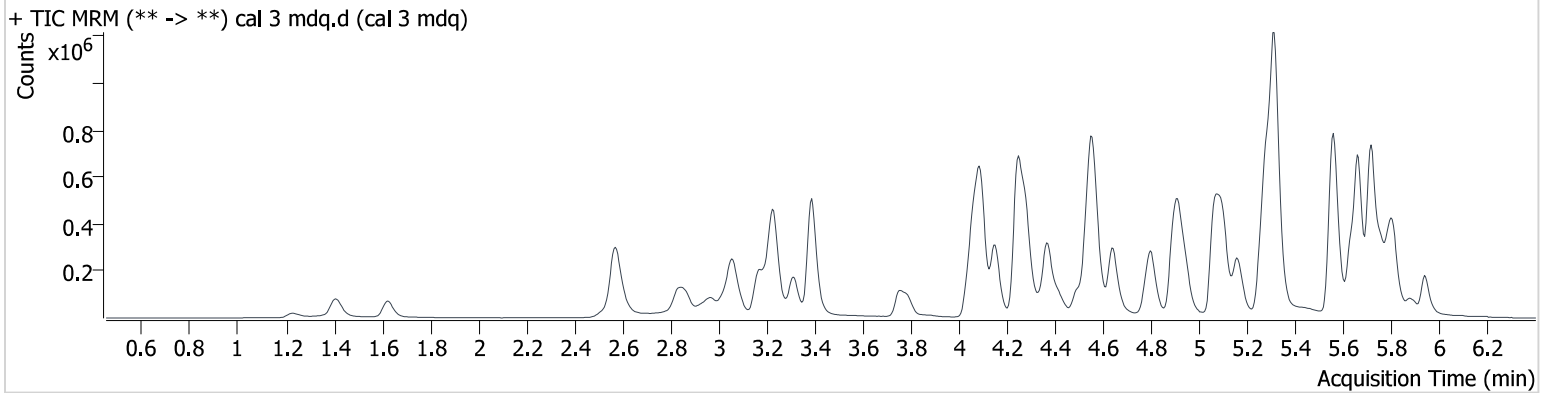
AM #28 Multi-Drug Quant. Results

Batch results D:\MassHunter\Data\2024\am 27-28\022824\QuantResults\am 28.batch.bin
Calibration Last Update 3/5/2024 9:43:10 AM

Instrument 69679
Type Cal
Acq. Method mdqp1 121523.m
Sample Position P2-C1
Injection Volume 3
Acq. Date-Time 2/28/2024 12:11:33 PM
Sample Info.

Data File cal 3 mdq.d
Sample cal 3 mdq
Operator Anne Nord
Comment Only drugs and concentrations listed on the laboratory report itself are appropriate to be used for interpretation purposes. Any drugs or values in the notes but not included on the report are used by laboratory personnel to make determinations/reach conclusions within the confines of the methods.

Sample Chromatogram



Name	RT	Resp.	S/N	Ratio	S/N	ISTD Resp.	Final Conc.
7-aminoclonazepam	4.263	22068	3025.8	131.30	4332.9	107991	26.747 ng/ml
Amphetamine	3.064	151259	4795.2	266.06	26298.8	178691	28.292 ng/ml
Bupropion	4.804	306179	53086.2	73.98	15568.7	338355	26.253 ng/ml
Clonazepam	5.607	38825	2152.9	34.55	6665.3	28529	26.627 ng/ml
Dihydrocodeine	2.560	43957	1585.0	68.39	1332.8	106843	27.131 ng/ml
Diphenhydramine	5.321	801682	63192.8	33.99	22053.0	1506631	23.352 ng/ml
Duloxetine	5.660	52508	264.0	9.01	1921.4	68424	25.558 ng/ml
Fentanyl	5.106	25668	3128.0	137.53	1636.4	450437	2.441 ng/ml
Hydrocodone	3.050	96291	20495.9	40.57	∞	206365	26.413 ng/ml
Hydromorphone	1.628	75262	∞	69.21	∞	92999	26.621 ng/ml
Ketamine	4.057	181709	32109.8	36.58	9239.1	338163	27.672 ng/ml
Lamotrigine	4.326	12544	54.8	100.66	42.5	127312	25.724 ng/ml
Methamphetamine	3.232	482376	80586.7	37.58	79795.9	481017	26.302 ng/ml
Metoprolol	4.335	47959	1453581.8	98.22	8434.3	378438	25.092 ng/ml
Norbuprenorphine	5.027	2562	2411.9	104.86	12982.6	16849	2.528 ng/ml
Norfentanyl	4.098	16021	1991.5	29.87	23476.9	719849	2.399 ng/ml
Norhydrocodone	3.102	16546	1918.0	23.19	∞	55740	23.255 ng/ml
O-desmethyl-tramadol	3.394	519027	100424.1	7.68	20957.4	797667	26.058 ng/ml
Olanzapine	4.492	252526	3271.4	41.97	525.9	236983	26.983 ng/ml
Quetiapine	5.563	397058	136849.0	68.24	259703.4	242913	28.192 ng/ml
Sertraline	5.788	100749	∞	91.46	∞	170180	25.050 ng/ml
Tramadol	4.254	410118	24849.7	4.03	10744.9	867111	27.285 ng/ml
Trazodone	5.157	257111	38190.7	123.94	245536.4	509416	26.705 ng/ml
Zolpidem	4.921	580412	34468.0	28.84	267481.2	914211	26.920 ng/ml

AM #28 Multi-Drug Quant. Results

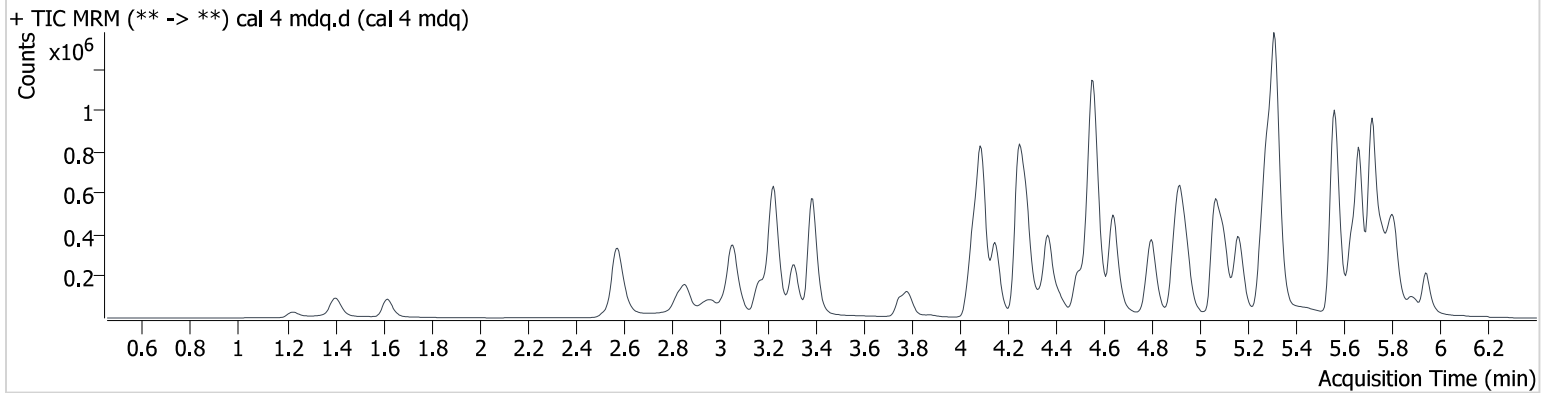
Batch results D:\MassHunter\Data\2024\am 27-28\022824\QuantResults\am 28.batch.bin
Calibration Last Update 3/5/2024 9:43:10 AM

Instrument 69679
Type Cal
Acq. Method mdqp1 121523.m
Sample Position P2-D1
Injection Volume 3
Acq. Date-Time 2/28/2024 12:20:16 PM
Sample Info.

Data File cal 4 mdq.d
Sample cal 4 mdq
Operator Anne Nord

Comment
Only drugs and concentrations listed on the laboratory report itself are appropriate to be used for interpretation purposes. Any drugs or values in the notes but not included on the report are used by laboratory personnel to make determinations/reach conclusions within the confines of the methods.

Sample Chromatogram



Name	RT	Resp.	S/N	Ratio	S/N	ISTD Resp.	Final Conc.
7-aminoclonazepam	4.258	37782	4021.7	128.84	6355.0	94749	53.811 ng/ml
Amphetamine	3.058	217980	5157.0	272.17	∞	146534	51.907 ng/ml
Bupropion	4.799	487059	131893.5	74.16	120270.1	266300	53.493 ng/ml
Clonazepam	5.607	60088	8784.5	35.36	1203.3	24003	48.971 ng/ml
Dihydrocodeine	2.560	71795	254.2	67.40	1230.9	89023	53.861 ng/ml
Diphenhydramine	5.316	1300034	66246.2	33.79	1001706.5	1133373	49.644 ng/ml
Duloxetine	5.660	84452	725.4	8.11	80.3	55105	51.324 ng/ml
Fentanyl	5.106	40260	1562.1	140.09	2125.7	368121	4.629 ng/ml
Hydrocodone	3.045	155438	5790.6	40.05	6265.5	168520	53.111 ng/ml
Hydromorphone	1.623	121917	∞	73.03	∞	78125	51.291 ng/ml
Ketamine	4.051	289517	42968.3	37.88	5238.4	275816	55.088 ng/ml
Lamotrigine	4.321	18570	16908.0	102.62	13463.6	95986	50.439 ng/ml
Methamphetamine	3.232	711559	372803.7	38.39	∞	385255	54.756 ng/ml
Metoprolol	4.335	75527	351153.3	98.16	25465.1	308642	47.534 ng/ml
Norbuprenorphine	5.022	4146	∞	104.27	3816.6	14287	4.996 ng/ml
Norfentanyl	4.098	25453	3351.3	28.05	2745.2	577988	4.681 ng/ml
Norhydrocodone	3.096	27194	∞	25.03	∞	45286	46.242 ng/ml
O-desmethyl-tramadol	3.389	843653	1558956.5	7.81	128349.8	641813	52.923 ng/ml
Olanzapine	4.492	471437	70033.1	42.94	20111.9	225296	54.063 ng/ml
Quetiapine	5.563	696507	250461.3	64.97	151230.5	222482	55.139 ng/ml
Sertraline	5.788	158340	∞	93.09	∞	129593	52.346 ng/ml
Tramadol	4.249	660669	∞	4.05	2084.8	697796	55.067 ng/ml
Trazodone	5.157	413703	68437.7	129.33	101220.7	424377	51.869 ng/ml
Zolpidem	4.916	933342	644943.2	29.59	95053.6	755505	52.975 ng/ml

AM #28 Multi-Drug Quant. Results

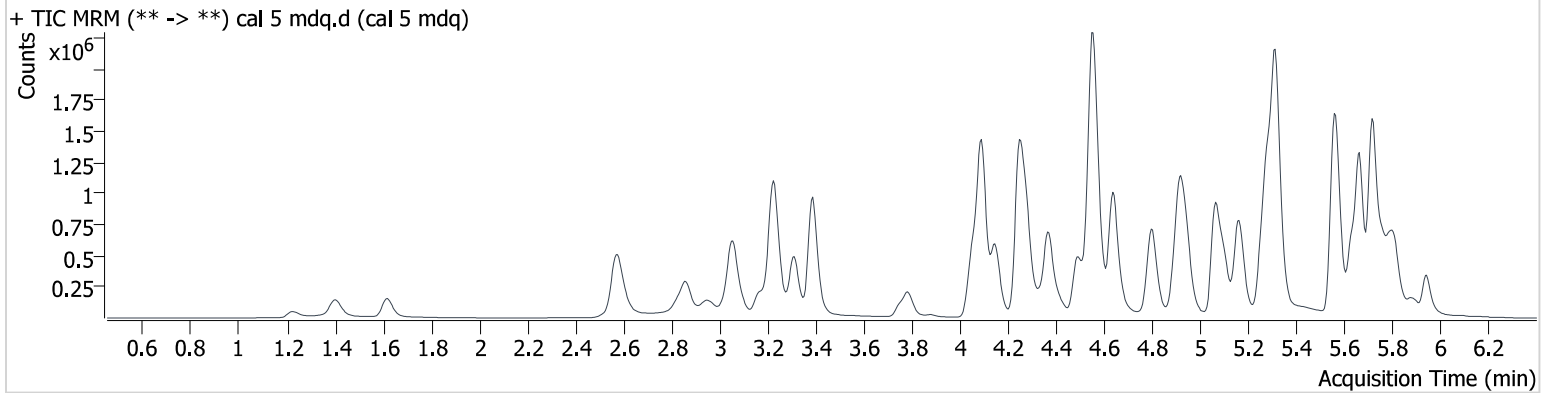
Batch results D:\MassHunter\Data\2024\am 27-28\022824\QuantResults\am 28.batch.bin
Calibration Last Update 3/5/2024 9:43:10 AM

Instrument 69679
Type Cal
Acq. Method mdqp1 121523.m
Sample Position P2-E1
Injection Volume 3
Acq. Date-Time 2/28/2024 12:28:58 PM
Sample Info.

Data File cal 5 mdq.d
Sample cal 5 mdq
Operator Anne Nord

Comment
Only drugs and concentrations listed on the laboratory report itself are appropriate to be used for interpretation purposes. Any drugs or values in the notes but not included on the report are used by laboratory personnel to make determinations/reach conclusions within the confines of the methods.

Sample Chromatogram



Name	RT	Resp.	S/N	Ratio	S/N	ISTD Resp.	Final Conc.
7-aminoclonazepam	4.253	67720	7302.8	124.56	8500.8	95088	97.445 ng/ml
Amphetamine	3.058	407168	157480.3	265.76	144916.9	152764	95.290 ng/ml
Bupropion	4.799	1019882	26994.9	73.82	1328078.9	296861	100.852 ng/ml
Clonazepam	5.607	112070	115977.4	34.70	5918.7	21570	101.627 ng/ml
Dihydrocodeine	2.560	144738	1442.1	67.94	4111.7	90383	107.645 ng/ml
Diphenhydramine	5.321	2620674	544778.2	32.81	∞	1160930	97.117 ng/ml
Duloxetine	5.660	151779	681.6	9.74	208.8	49106	103.799 ng/ml
Fentanyl	5.106	89879	13748.5	142.86	12748.5	388161	9.733 ng/ml
Hydrocodone	3.045	330230	4894.4	40.95	7629.2	176228	108.848 ng/ml
Hydromorphone	1.618	255949	∞	73.43	∞	85143	98.758 ng/ml
Ketamine	4.051	563766	81798.9	38.17	15248.7	289003	103.305 ng/ml
Lamotrigine	4.321	32717	37439.1	102.78	1495.8	86719	98.291 ng/ml
Methamphetamine	3.232	1372111	1889989.4	38.87	133655.4	425303	101.246 ng/ml
Metoprolol	4.335	146130	201793.8	97.90	∞	298499	94.106 ng/ml
Norbuprenorphine	5.022	8537	9821.9	103.83	7394.7	15558	9.616 ng/ml
Norfentanyl	4.098	46781	4742.9	29.49	26397.8	522098	9.453 ng/ml
Norhydrocodone	3.096	63971	2345.1	23.72	1325.7	49934	97.768 ng/ml
O-desmethyl-tramadol	3.389	1785183	484814.4	7.55	21496.8	708313	101.725 ng/ml
Olanzapine	4.487	1046857	8410.6	43.33	32145.0	263618	103.601 ng/ml
Quetiapine	5.569	1411564	216364.0	63.40	494704.3	225566	111.467 ng/ml
Sertraline	5.788	285964	∞	92.41	∞	119241	103.329 ng/ml
Tramadol	4.249	1341610	∞	4.03	2037.7	751795	104.186 ng/ml
Trazodone	5.162	875800	28391.1	126.00	168371.1	452609	103.260 ng/ml
Zolpidem	4.921	1929745	4432535.2	29.99	∞	825862	100.756 ng/ml

AM #28 Multi-Drug Quant. Results

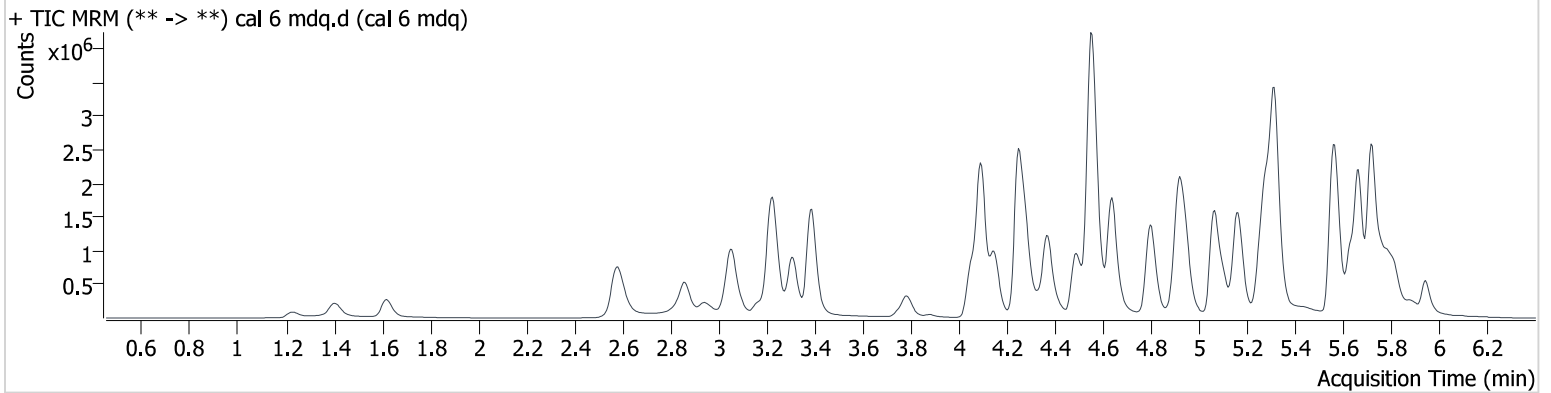
Batch results D:\MassHunter\Data\2024\am 27-28\022824\QuantResults\am 28.batch.bin
Calibration Last Update 3/5/2024 9:43:10 AM

Instrument 69679
Type Cal
Acq. Method mdqp1 121523.m
Sample Position P2-F1
Injection Volume 3
Acq. Date-Time 2/28/2024 12:37:40 PM
Sample Info.

Data File cal 6 mdq.d
Sample cal 6 mdq
Operator Anne Nord
Comment

Only drugs and concentrations listed on the laboratory report itself are appropriate to be used for interpretation purposes. Any drugs or values in the notes but not included on the report are used by laboratory personnel to make determinations/reach conclusions within the confines of the methods.

Sample Chromatogram



Name	RT	Resp.	S/N	Ratio	S/N	ISTD Resp.	Final Conc.
7-aminoclonazepam	4.253	100353	16816.9	115.69	23542.8	66833	207.338 ng/ml
Amphetamine	3.058	678553	70272.0	264.11	108655.9	130230	189.039 ng/ml
Bupropion	4.799	2202713	∞	71.01	218569.0	250802	258.473 ng/ml
Clonazepam	5.607	192987	246415.4	35.31	19911.7	15757	239.549 ng/ml
Dihydrocodeine	2.560	272045	3142.2	66.58	20120.6	77338	237.299 ng/ml
Diphenhydramine	5.316	5071560	555272.4	32.57	181092.3	870832	249.600 ng/ml
Duloxetine	5.660	245990	1399.2	9.41	402.2	33491	247.048 ng/ml
Fentanyl	5.106	199094	128873.2	141.28	25418.2	337759	24.684 ng/ml
Hydrocodone	3.045	659787	4450.9	40.48	∞	152743	252.113 ng/ml
Hydromorphone	1.618	517402	∞	72.66	∞	69425	244.771 ng/ml
Ketamine	4.051	1058519	373322.1	37.42	93273.3	238350	236.567 ng/ml
Lamotrigine	4.321	52485	187.6	99.46	119943.9	53088	257.459 ng/ml
Methamphetamine	3.227	2559994	∞	38.80	192232.1	374403	222.974 ng/ml
Metoprolol	4.335	263286	776867.8	100.98	22799.2	211677	237.578 ng/ml
Norbuprenorphine	5.022	19342	23299.8	95.74	30509.1	13098	26.197 ng/ml
Norfentanyl	4.098	72904	2692.4	29.16	15085.0	319309	23.980 ng/ml
Norhydrocodone	3.096	127491	8856.7	25.37	3910.5	38999	248.270 ng/ml
O-desmethyl-tramadol	3.388	3710919	371929.7	7.24	89829.5	604110	248.332 ng/ml
Olanzapine	4.487	2096933	109545.4	43.92	9177.1	228127	241.275 ng/ml
Quetiapine	5.569	2411169	1675839.4	61.61	478829.4	171076	252.616 ng/ml
Sertraline	5.788	460501	∞	91.48	∞	78551	253.468 ng/ml
Tramadol	4.249	2696253	∞	4.06	99462.0	616647	255.923 ng/ml
Trazodone	5.157	1793345	542496.8	129.48	1125605.9	395141	242.610 ng/ml
Zolpidem	4.916	3879370	241551.1	29.39	279854.6	683124	245.767 ng/ml

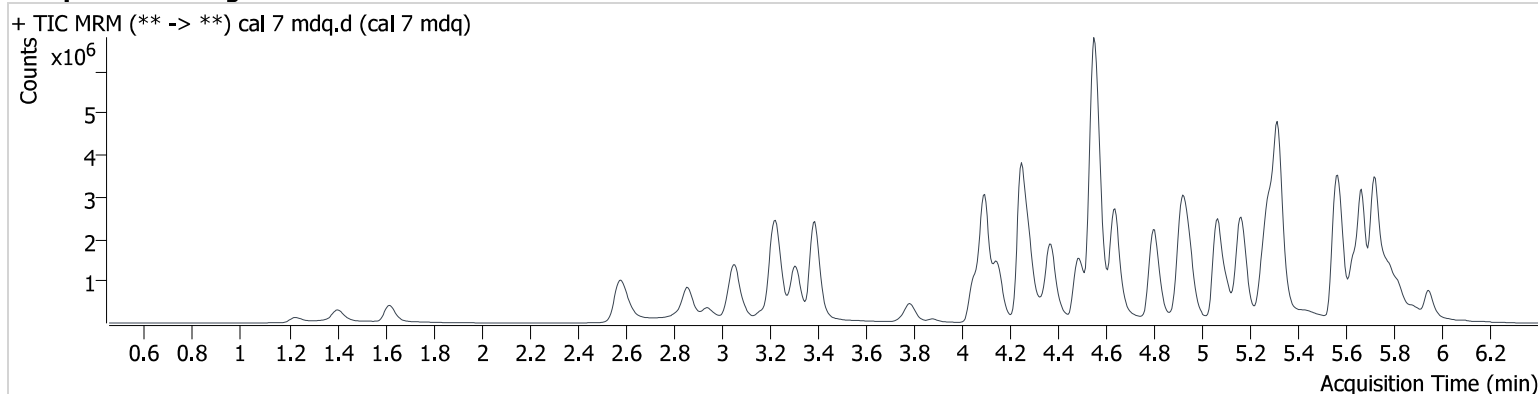
AM #28 Multi-Drug Quant. Results

Batch results D:\MassHunter\Data\2024\am 27-28\022824\QuantResults\am 28.batch.bin
Calibration Last Update 3/5/2024 9:43:10 AM

Instrument 69679
Type Cal
Acq. Method mdqp1 121523.m
Sample Position P2-G1
Injection Volume 3
Acq. Date-Time 2/28/2024 12:46:22 PM
Sample Info.

Data File cal 7 mdq.d
Sample cal 7 mdq
Operator Anne Nord
Comment Only drugs and concentrations listed on the laboratory report itself are appropriate to be used for interpretation purposes. Any drugs or values in the notes but not included on the report are used by laboratory personnel to make determinations/reach conclusions within the confines of the methods.

Sample Chromatogram



Name	RT	Resp.	S/N	Ratio	S/N	ISTD Resp.	Final Conc.
7-aminoclonazepam	4.253	127383	29000.5	116.14	18023.7	51430	343.114 ng/ml
Amphetamine	3.064	937745	136718.2	258.38	32125.2	114959	297.585 ng/ml
Bupropion	4.804	3798146	895011.4	69.08	170396.5	232477	481.181 ng/ml
Clonazepam	5.607	276425	89174.2	34.21	7878.6	10827	499.363 ng/ml
Dihydrocodeine	2.560	432590	20008.9	66.13	16102.0	69753	418.910 ng/ml
Diphenhydramine	5.321	7706356	∞	31.25	128918.1	641568	514.167 ng/ml
Duloxetine	5.665	275902	826.3	9.48	11059.4	18219	509.658 ng/ml
Fentanyl	5.106	372342	50477.1	141.43	10523.4	296308	52.554 ng/ml
Hydrocodone	3.040	1089788	∞	41.31	124305.7	136941	465.249 ng/ml
Hydromorphone	1.618	871898	∞	72.02	∞	58452	489.861 ng/ml
Ketamine	4.046	1552783	327090.3	37.76	55682.1	204124	405.989 ng/ml
Lamotrigine	4.321	67655	103.2	95.86	45854.1	37097	474.856 ng/ml
Methamphetamine	3.227	4036475	∞	38.13	254577.0	370063	360.162 ng/ml
Metoprolol	4.335	398465	∞	99.79	∞	151686	500.666 ng/ml
Norbuprenorphine	5.022	32952	14914.5	101.35	∞	11834	49.562 ng/ml
Norfentanyl	4.103	91032	∞	28.79	64848.4	184328	51.791 ng/ml
Norhydrocodone	3.096	205058	5201.1	24.66	1564.1	30778	505.163 ng/ml
O-desmethyl-tramadol	3.389	6189970	561099.9	7.04	119302.5	521823	479.807 ng/ml
Olanzapine	4.482	3458362	30804.1	44.58	5383.0	212457	428.131 ng/ml
Quetiapine	5.569	3340003	811312.3	63.28	1515828.8	146030	410.725 ng/ml
Sertraline	5.788	611217	∞	95.04	∞	54924	481.693 ng/ml
Tramadol	4.249	4314984	∞	3.93	∞	534702	472.715 ng/ml
Trazodone	5.162	3025174	368880.0	131.29	311003.6	357699	452.363 ng/ml
Zolpidem	4.916	6043195	531010.9	29.95	314026.6	599355	436.845 ng/ml

AM #28 Multi-Drug Quant. Results

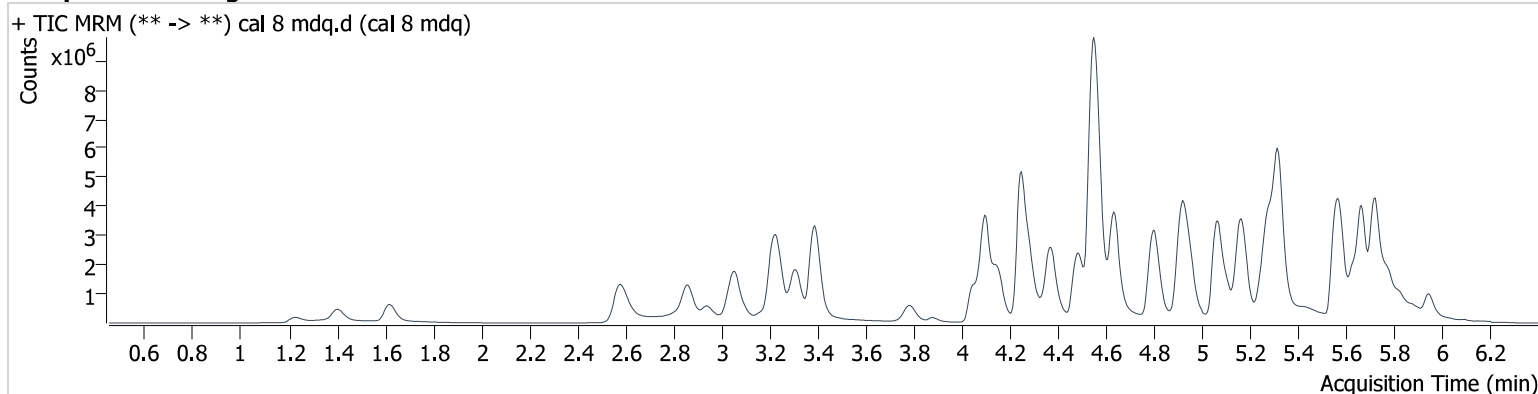
Batch results D:\MassHunter\Data\2024\am 27-28\022824\QuantResults\am 28.batch.bin
Calibration Last Update 3/5/2024 9:43:10 AM

Instrument 69679
Type Cal
Acq. Method mdqp1 121523.m
Sample Position P2-H1
Injection Volume 3
Acq. Date-Time 2/28/2024 1:03:48 PM
Sample Info.

Data File cal 8 mdq.d
Sample cal 8 mdq
Operator Anne Nord
Comment

Only drugs and concentrations listed on the laboratory report itself are appropriate to be used for interpretation purposes. Any drugs or values in the notes but not included on the report are used by laboratory personnel to make determinations/reach conclusions within the confines of the methods.

Sample Chromatogram



Name	RT	Resp.	S/N	Ratio	S/N	ISTD Resp.	Final Conc.
7-aminoclonazepam	4.253	151627	15885.4	116.51	16368.8	36492	576.753 ng/ml
Amphetamine	3.064	1168108	79000.5	258.74	269097.1	100450	425.461 ng/ml
Bupropion	4.799	5826424	1062928.3	67.61	609362.7	191657	895.716 ng/ml
Clonazepam	5.607	332671	284227.6	34.19	56236.9	6689	972.703 ng/ml
Dihydrocodeine	2.560	657526	15686.6	66.36	24462.0	64395	690.169 ng/ml
Diphenhydramine	5.321	10526579	903249.0	29.94	239227.3	420012	1072.158 ng/ml
Duloxetine	5.671	249901	98.4	10.58	123.0	9340	900.671 ng/ml
Fentanyl	5.106	627636	49933.8	150.33	18624.2	241180	108.771 ng/ml
Hydrocodone	3.040	1765104	∞	40.95	∞	121757	848.283 ng/ml
Hydromorphone	1.618	1484120	∞	72.57	∞	49870	977.278 ng/ml
Ketamine	4.046	1978484	373585.3	37.54	365089.9	166803	633.639 ng/ml
Lamotrigine	4.316	74446	31696.5	94.73	62620.6	19941	972.017 ng/ml
Methamphetamine	3.227	5688830	446140.2	36.82	77842.5	356012	531.118 ng/ml
Metoprolol	4.335	528999	4639392.9	98.79	∞	87923	1145.441 ng/ml
Norbuprenorphine	5.022	52552	105618.2	100.46	75546.2	9538	98.255 ng/ml
Norfentanyl	4.103	95209	5137.3	28.30	96502.0	84943	117.457 ng/ml
Norhydrocodone	3.096	326185	7967.8	27.82	13976.8	21070	1172.780 ng/ml
O-desmethyl-tramadol	3.388	9662091	416548.5	6.85	299856.1	414474	943.187 ng/ml
Olanzapine	4.482	5603540	302906.0	44.47	1998.4	216017	682.927 ng/ml
Quetiapine	5.569	4498311	6938540.9	62.05	567568.6	119052	679.330 ng/ml
Sertraline	5.788	720207	∞	93.66	∞	32740	952.752 ng/ml
Tramadol	4.244	6086492	∞	3.92	15082.9	441796	807.322 ng/ml
Trazodone	5.162	4494211	352156.1	131.51	3575396.3	297380	808.587 ng/ml
Zolpidem	4.916	9035699	1534919.5	30.17	462660.3	546008	717.381 ng/ml